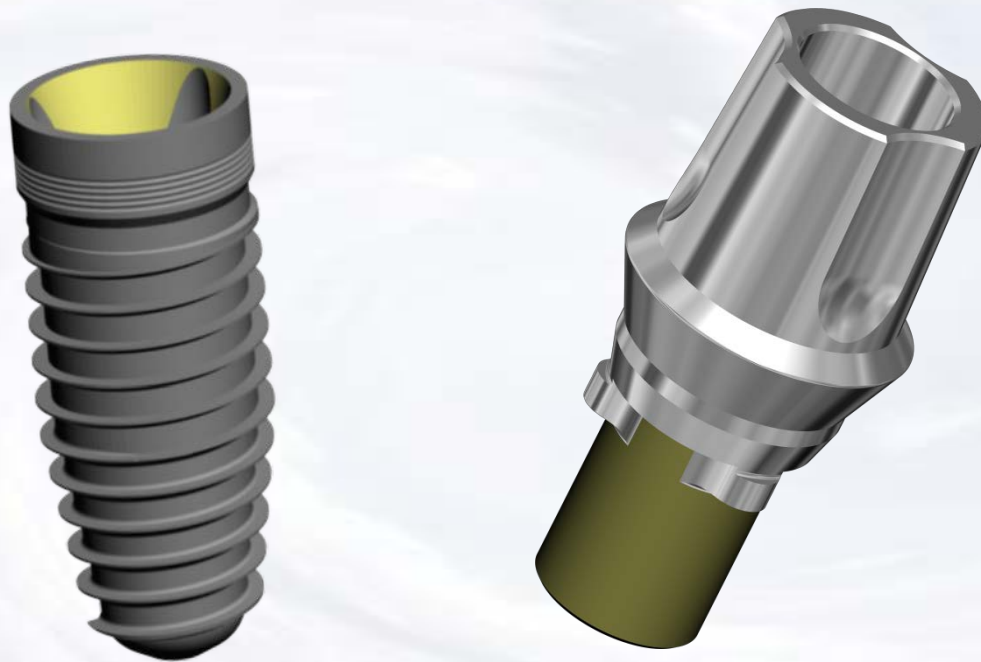
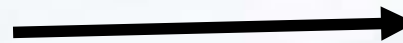


KISS Trilobe Abutment System



Blue Sky Bio

KISS Trilobe Abutment System



Choose matching
abutment

Healing abutment in place

The presentation that follows lists only one combination of parts. Obviously the clinical situation may call for substitution of another part on this slide.

3.5 Platform KISS 2mm

		Size	Part #
		3.5 Regular KISS Kit 2mm	KASTT35R02
		3.5 Regular KISS 2mm	ASTT35R02
		3.5 Abutment Level Analog Regular	BAKISR
		Waxing Sleeve Regular	WSR
		Impression Coping Regular	MCTR
		Comfort Cap Regular	TMPSR

4.3 Platform KISS 2mm

		Size	Part #
		4.3 Regular KISS Kit 2mm	KASTT43R02
		4.3 Regular KISS 2mm	ASTT43R02
		4.3 Abutment Level Analog Regular	BAKISR
		Waxing Sleeve Regular	WSR
		Impression Coping Regular	MCTR
		Comfort Cap Regular	TMPSR


5.0 Platform KISS 2mm

		Size	Part #
		5.0 Regular KISS Kit 2mm	KASTT50R02
		5.0 Regular KISS 2mm	ASTT50R02
		5.0 Abutment Level Analog Wide	BAKISW
		Waxing Sleeve Wide	WSW
		Impression Coping Wide	MCTW
		Comfort Cap Wide	TMPSW



Blue Sky Bio

KISS Trilobe Abutment System

	Size	Part #
	.048 Hex Driver Short	SDS048
	.048 Hex Driver Long	SDL048
	Adapter for NB Ratchet	NA
	Instrument Box	PIB
Trilobe Complete Prosthetic Kit		TCPK

Prosthetic instruments needed

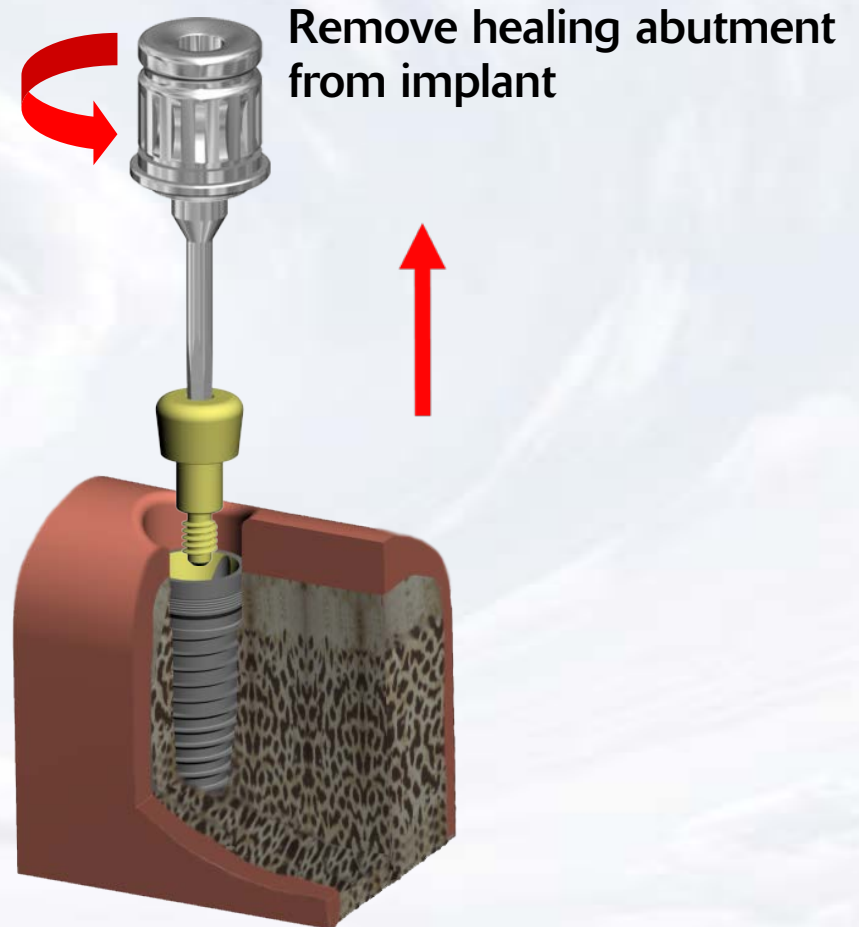


Blue Sky Bio

KISS Trilobe Abutment System

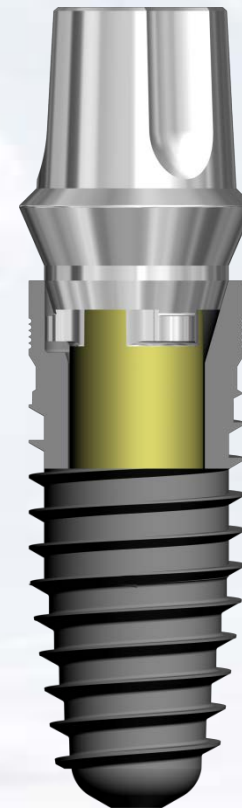
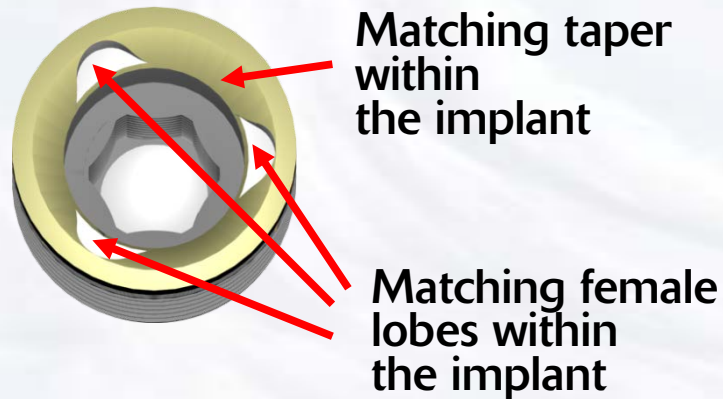
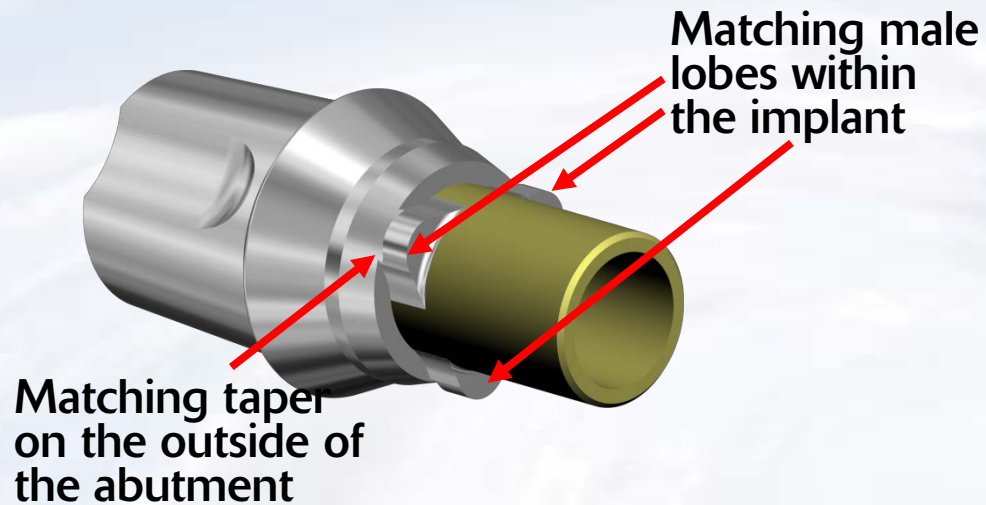
Assemble screw driver with
Ratchet Adapter

Insert assembled screw driver
into cover screw



Blue Sky Bio

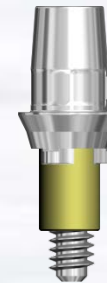
KISS Trilobe Abutment System



Blue Sky Bio

KISS Trilobe Abutment System

Insert assembled screw driver into
Trilobe KISS Abutment

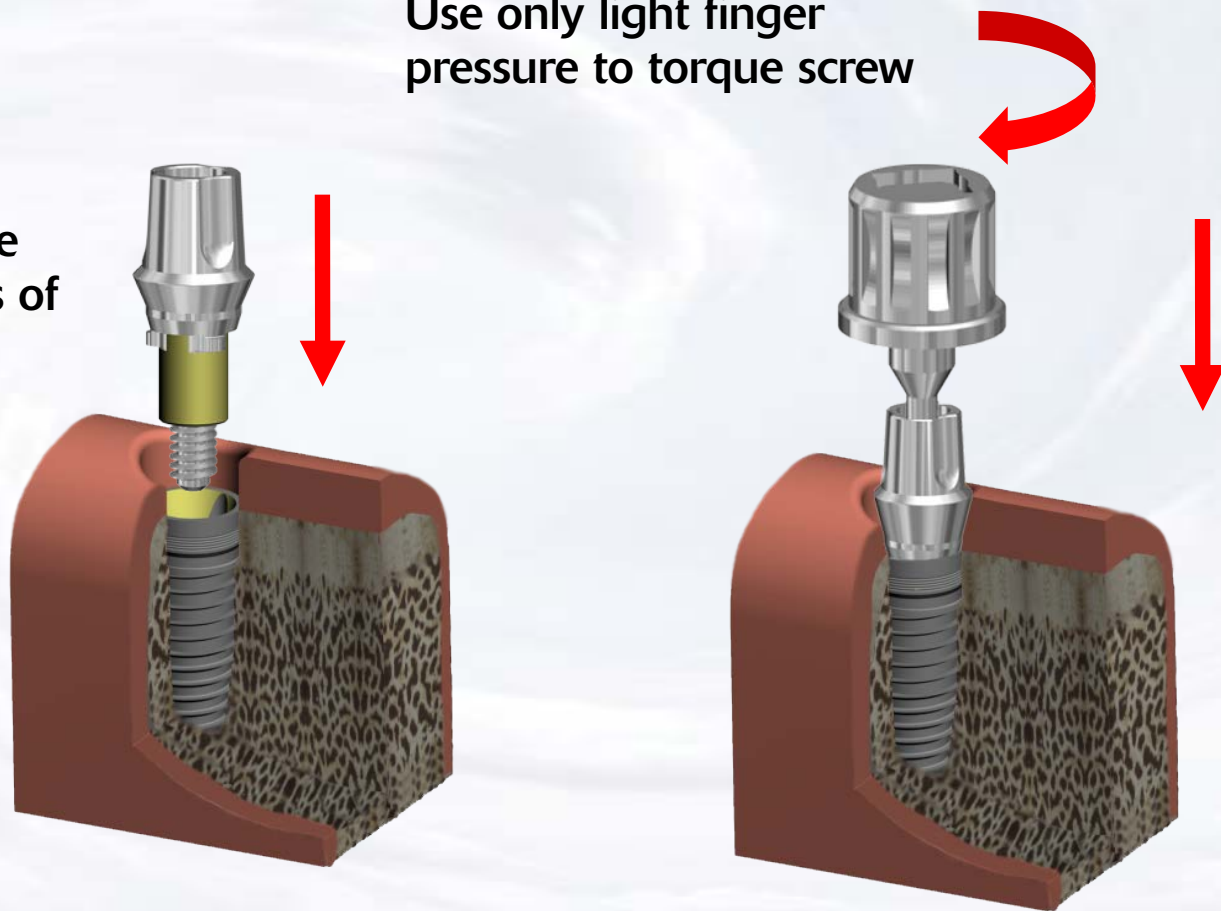


Blue Sky Bio

KISS Trilobe Abutment System

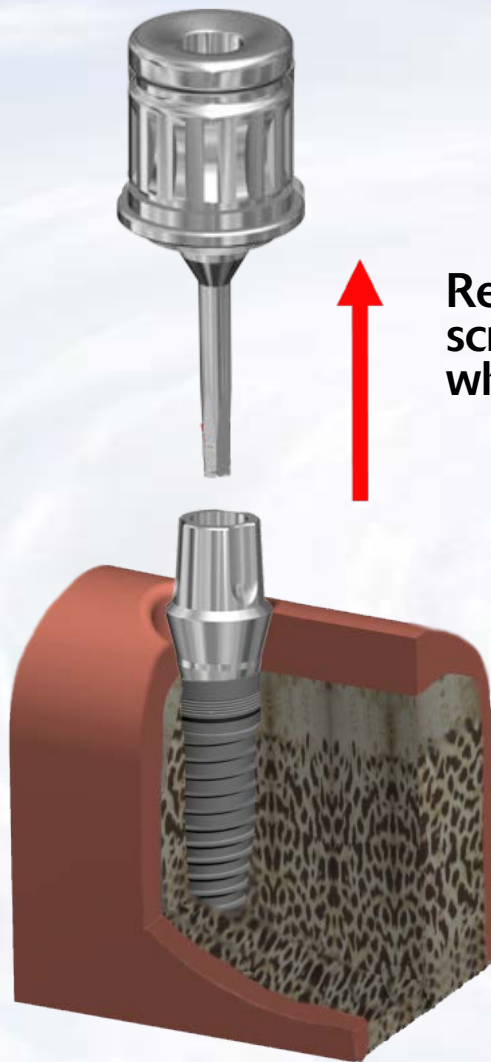
Insert the Trilobe KISS Abutment into implant lining up the lobes of the abutment with the lobes of the implant

Use only light finger pressure to torque screw



Blue Sky Bio

KISS Trilobe Abutment System



Remove the
screwdriver thumb
wheel assembly



Separate the
screwdriver thumb
wheel assembly
from the 0.48 Hex
driver



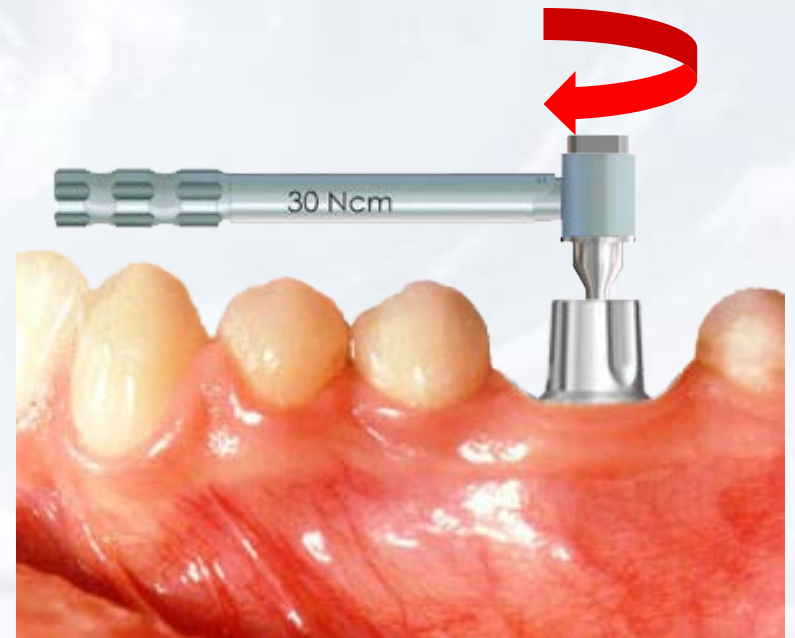
Blue Sky Bio

KISS Trilobe Abutment System

Insert the hex driver within the 30Ncm torque ratchet

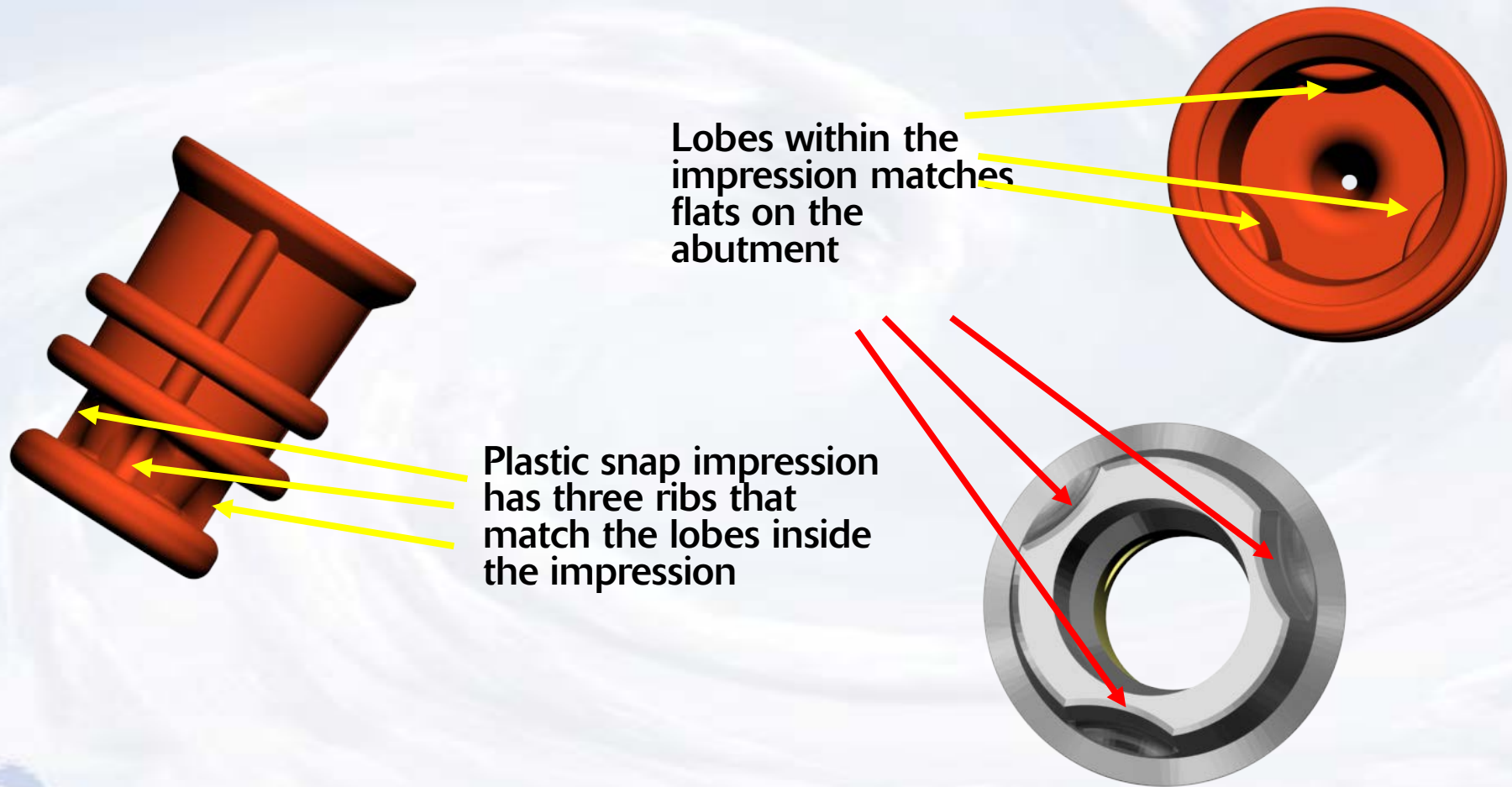


Insert driver into the abutment screw and turn torque ratchet until torque of 30 Ncm is reached and the head of the ratchet releases



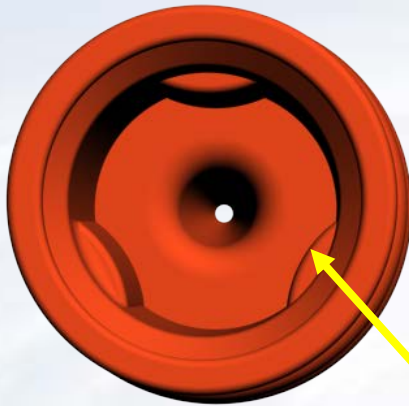
Blue Sky Bio

KISS Trilobe Abutment System



Blue Sky Bio

KISS Trilobe Abutment System



Line up the lobes of the KISS Abutment with the internal lobes of the snap impression coping

Seat snap impression coping on the solid abutment

The outside should snap on the bevel of the implant.



Blue Sky Bio

KISS Trilobe Abutment System

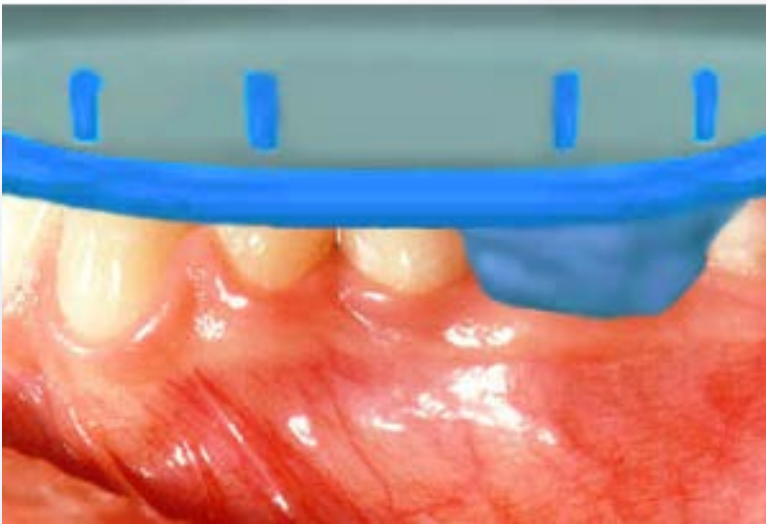


Inject impression material around the
impression transfer

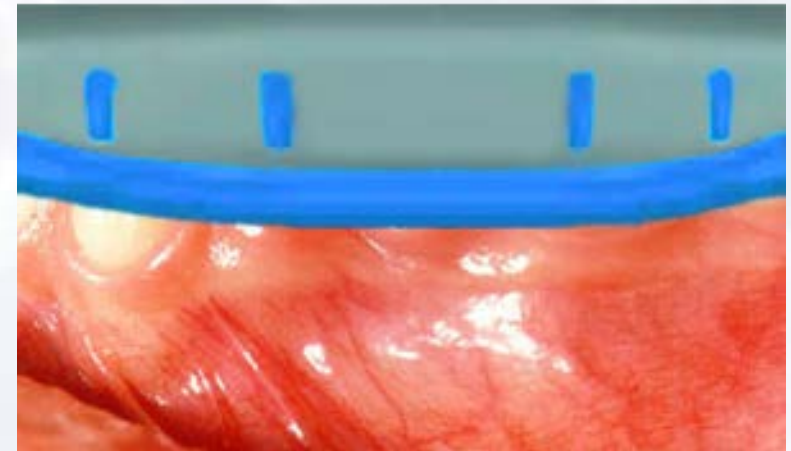


Blue Sky Bio

KISS Trilobe Abutment System



Insert tray with impression material

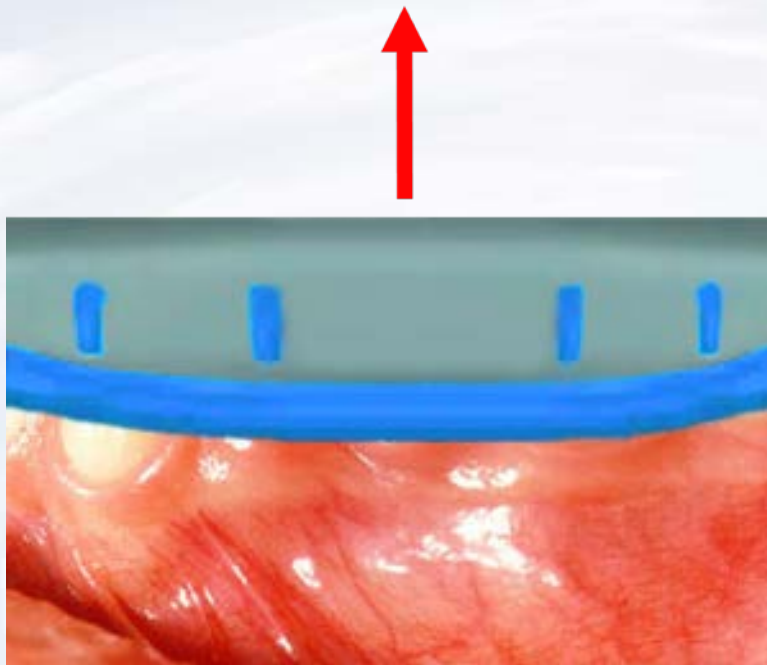


Seat impression to capture dental arch



Blue Sky Bio

KISS Trilobe Abutment System



Remove the impression from the mouth when material has set

Impression snap is captured and picked up within the impression



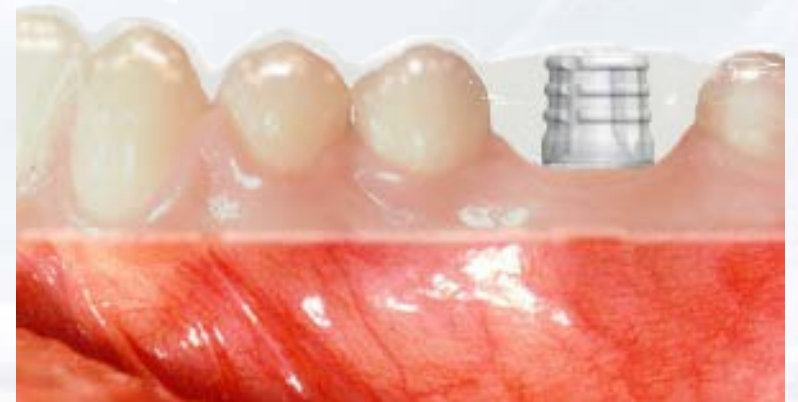
Blue Sky Bio

KISS Trilobe Abutment System

Seat the temporary resin sleeve over the abutment



Use a crown form to reline over the sleeve to create a well fitting temporary



Blue Sky Bio

KISS Trilobe Abutment System

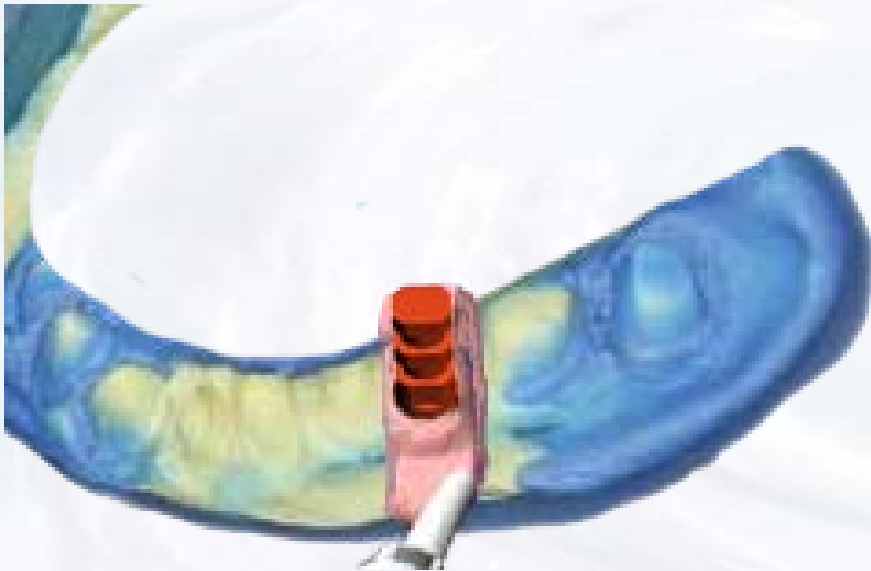
Laboratory abutment analog is inserted into the impression coping. Make sure to match the lobes on the abutment analog to the lobes of the impression snap



Blue Sky Bio

KISS Trilobe Abutment System

Apply soft tissue replica material around abutment level analog

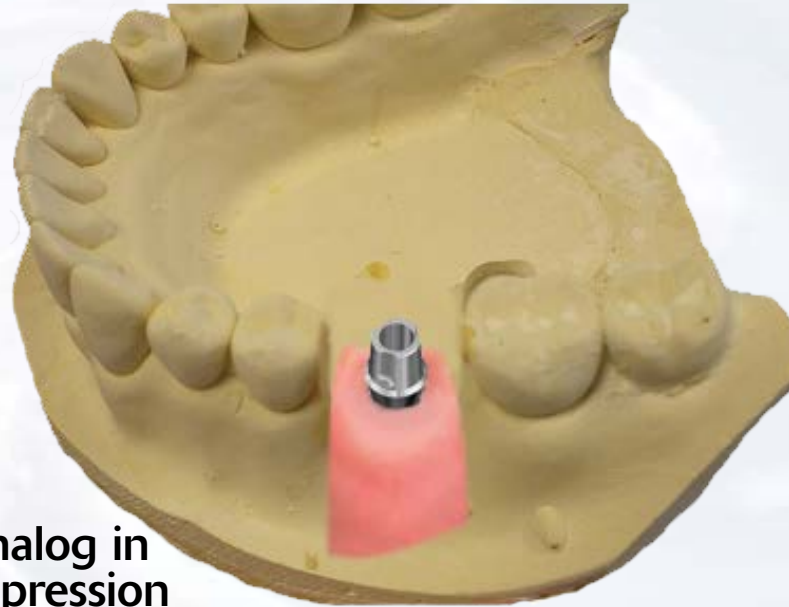


Pour dental stone into impression



Blue Sky Bio

KISS Trilobe Abutment System

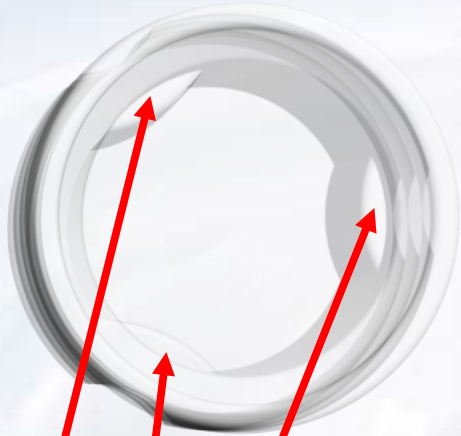


Dental stone model with analog in place after separation of impression from dried stone



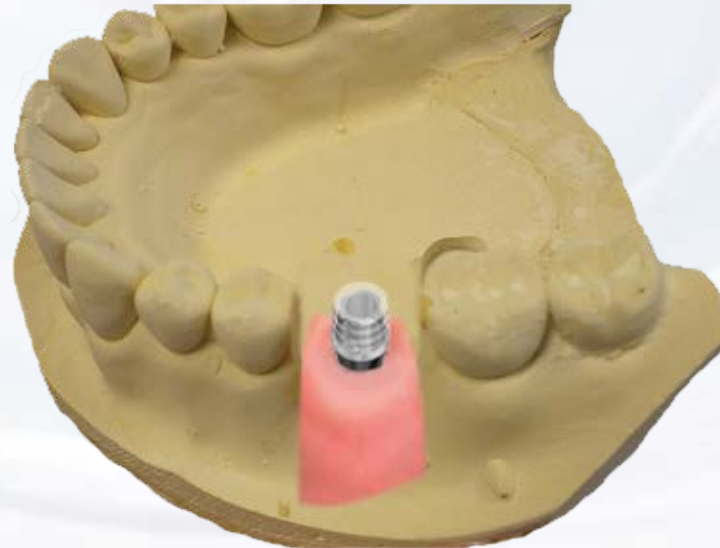
Blue Sky Bio

KISS Trilobe Abutment System



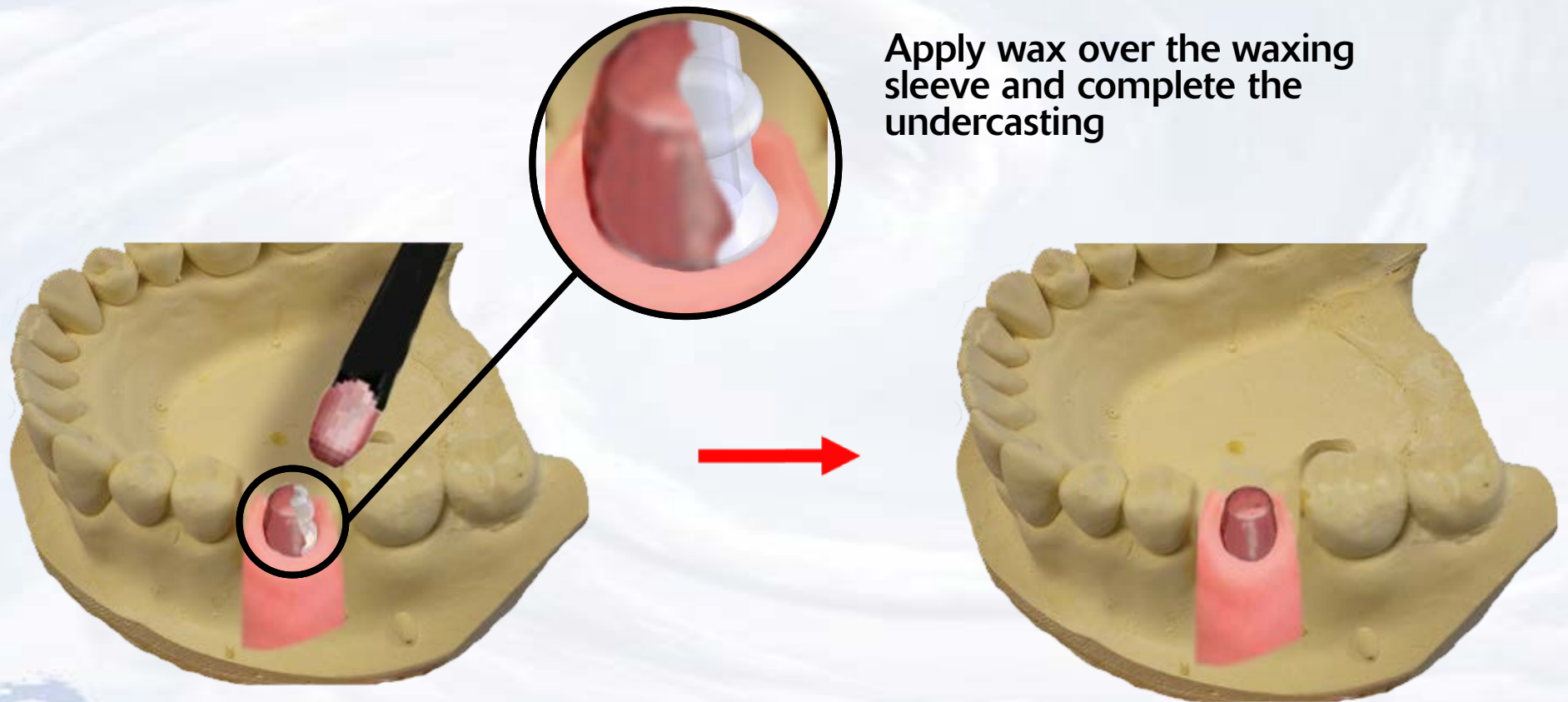
Engaging waxing sleeve has internal lobes to match the lobes on the abutment analog

Apply engaging waxing sleeve for a single crown, non-engaging waxing sleeve for a splinted multi-unit restoration.



Blue Sky Bio

KISS Trilobe Abutment System



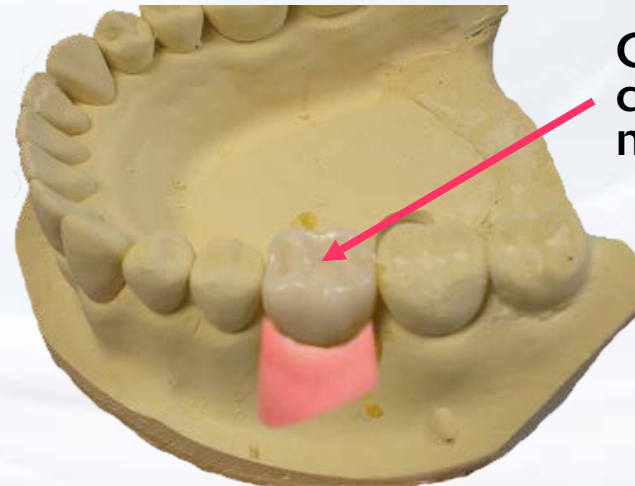
Blue Sky Bio

KISS Trilobe Abutment System

Cast wax up with the usual procedures and try in the casting on the stone model



Stack and fire the ceramic in the usual manner



Ceramic crown on model



Blue Sky Bio

KISS Trilobe Abutment System



Cement restoration on
abutment



Blue Sky Bio