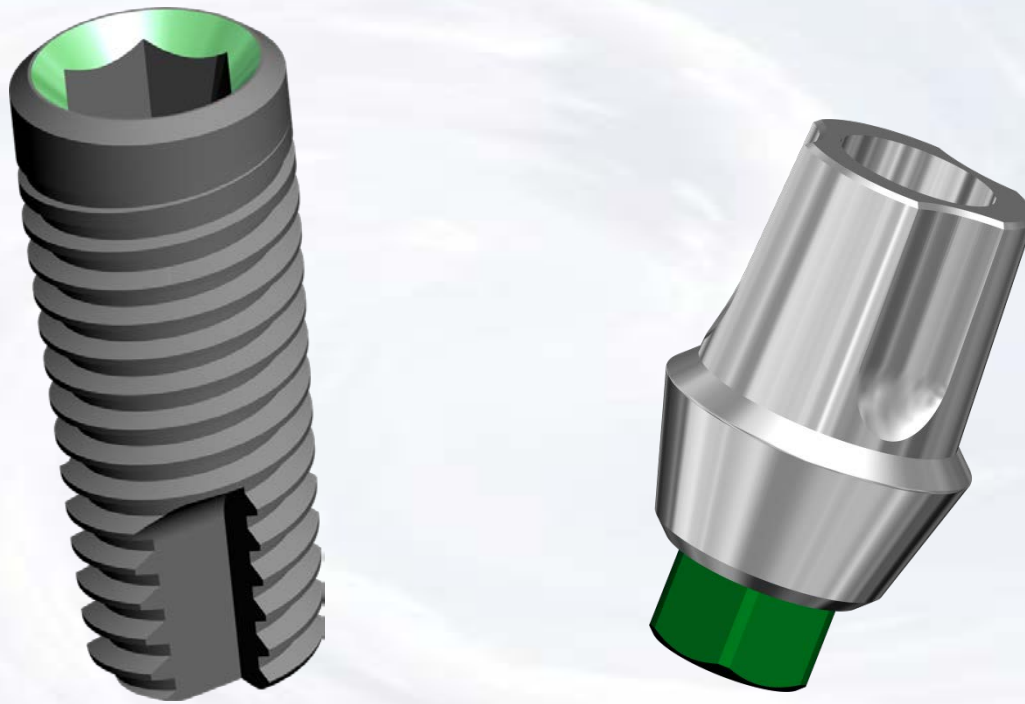
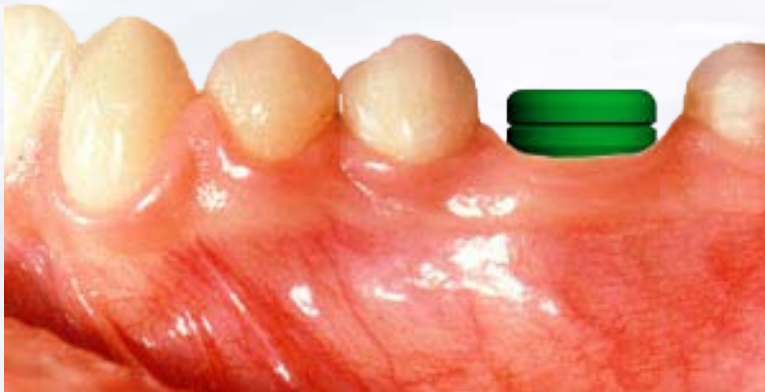


KISS Internal Hex Abutment System



Blue Sky Bio

KISS Internal Hex Abutment System



Choose matching
abutment

Healing abutment in place

The presentation that follows lists only one combination of parts. Obviously the clinical situation may call for substitution of another part on this slide.

3.5 Platform Regular KISS

Size	Part #
3.5 Regular KISS Complete Kit 1mm collar	KASIH3SR01
3.5 Regular KISS Complete Kit 2mm collar	KASIH3SR02
3.5 Regular KISS Complete Kit 3mm collar	KASIH3SR03
3.5 Regular KISS Abutment 1mm collar	ASIH3SR01
3.5 Regular KISS Abutment 2mm collar	ASIH3SR02
3.5 Regular KISS Abutment 3mm collar	ASIH3SR03
KISS Impression Kit Regular	KIKR

4.5 Platform Regular KISS

Size	Part #
4.5 Regular KISS Complete Kit 1mm collar	KASIH4SR01
4.5 Regular KISS Complete Kit 2mm collar	KASIH4SR02
4.5 Regular KISS Complete Kit 3mm collar	KASIH4SR03
4.5 Regular KISS Abutment 1mm collar	ASIH4SR01
4.5 Regular KISS Abutment 2mm collar	ASIH4SR02
4.5 Regular KISS Abutment 3mm collar	ASIH4SR03
KISS Impression Kit Regular	KIKR

4.5 Platform Wide KISS

Size	Part #
4.5 Wide KISS Complete Kit 1mm collar	KASIH4SW01
4.5 Wide KISS Complete Kit 2mm collar	KASIH4SW02
4.5 Wide KISS Complete Kit 3mm collar	KASIH4SW03
4.5 Wide KISS Abutment 1mm collar	ASIH4SW01
4.5 Wide KISS Abutment 2mm collar	ASIH4SW02
4.5 Wide KISS Abutment 3mm collar	ASIH4SW03
KISS Impression Kit Wide	KIKW



Blue Sky Bio

KISS Internal Hex Abutment System

	Size	Part #
	.050 Hex Driver Short	SDS050
	.050 Hex Driver Long	SDL050
	Torque/Ratchet Wrench	TR-900-01
	Thumb Knob for Drivers	TK

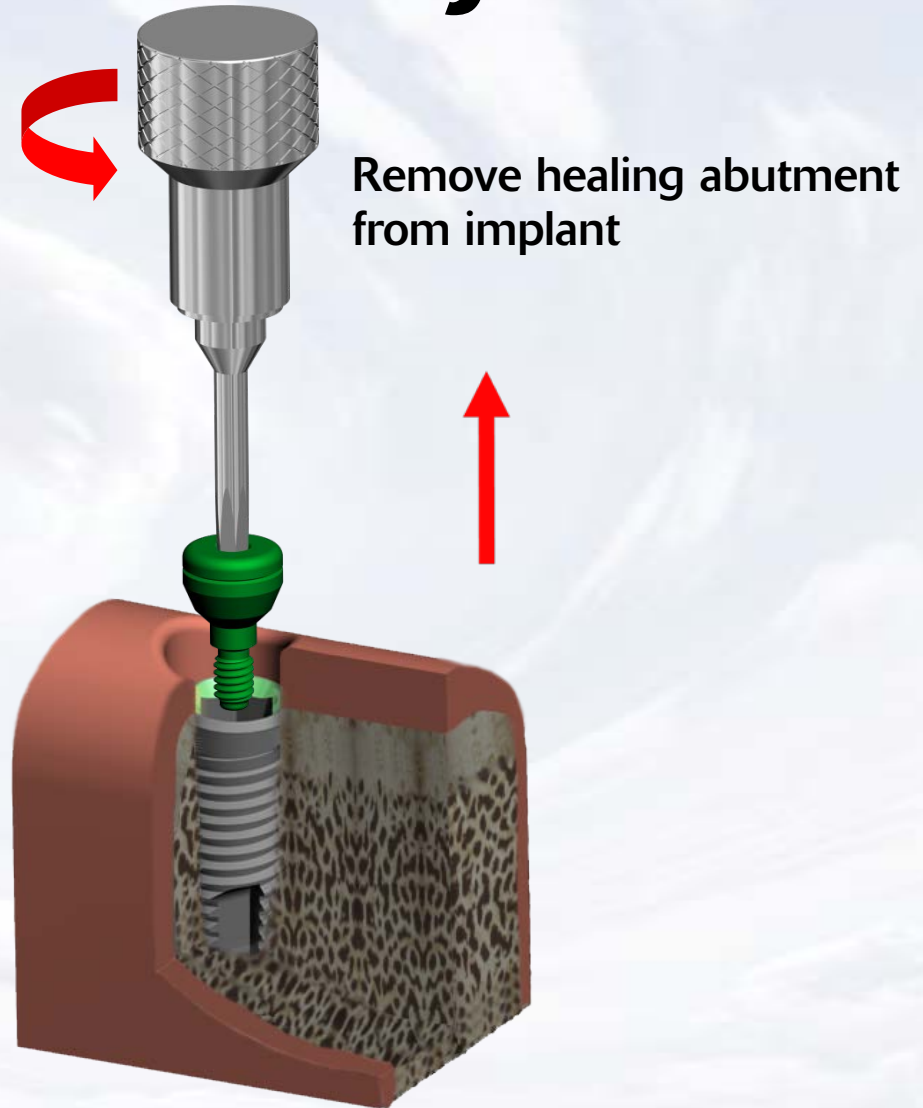
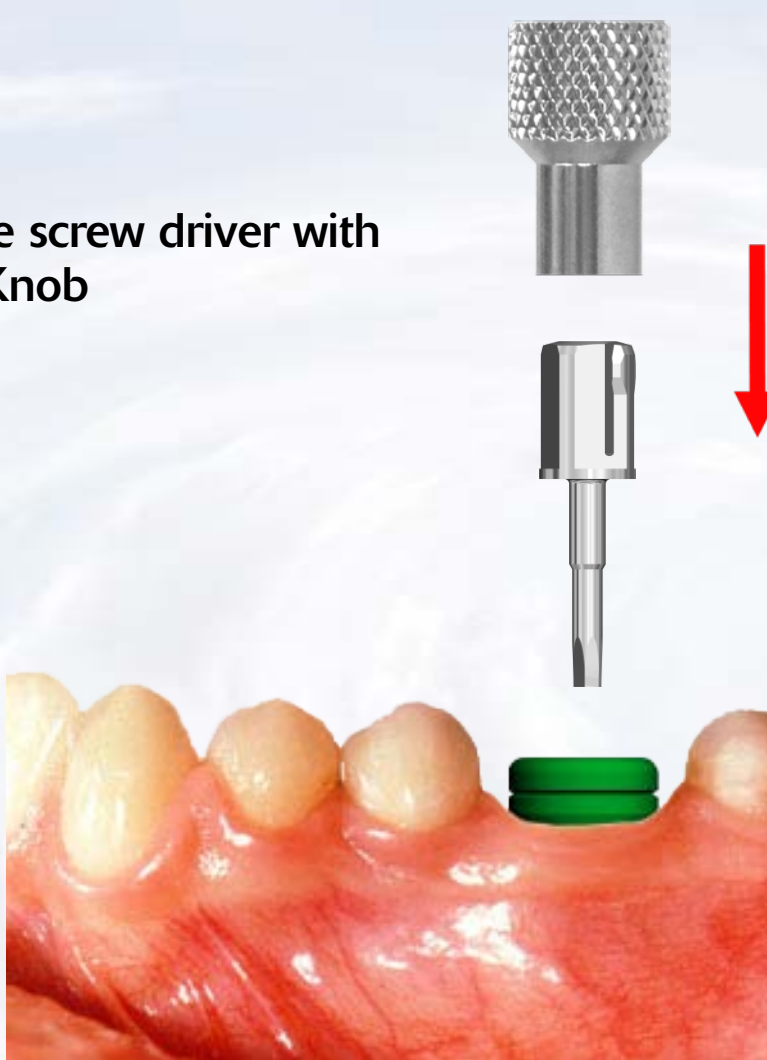
Prosthetic instruments needed



Blue Sky Bio

KISS Internal Hex Abutment System

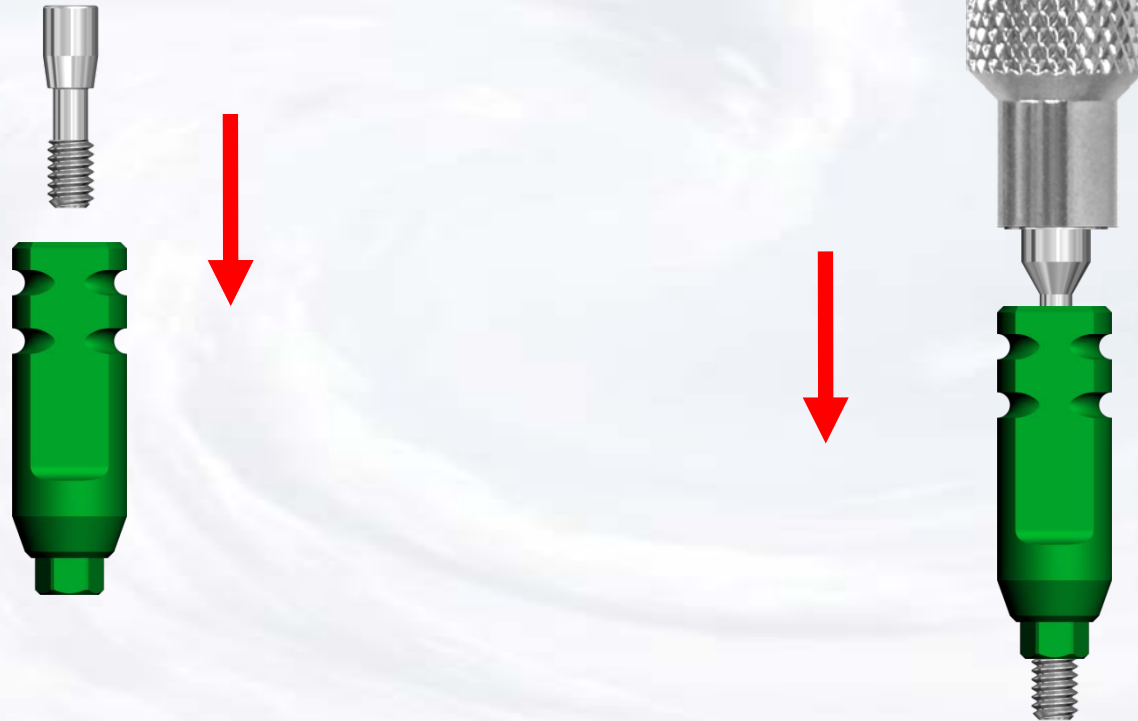
Assemble screw driver with
Thumb Knob



Blue Sky Bio

KISS Internal Hex Abutment System

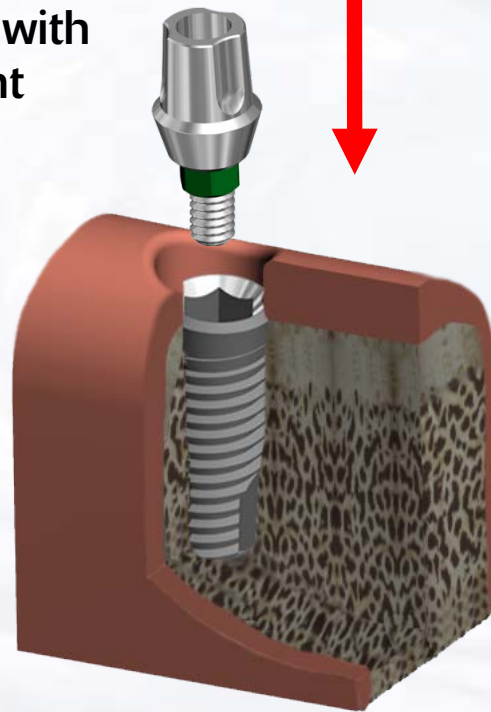
Insert assembled screw driver into
impression transfer



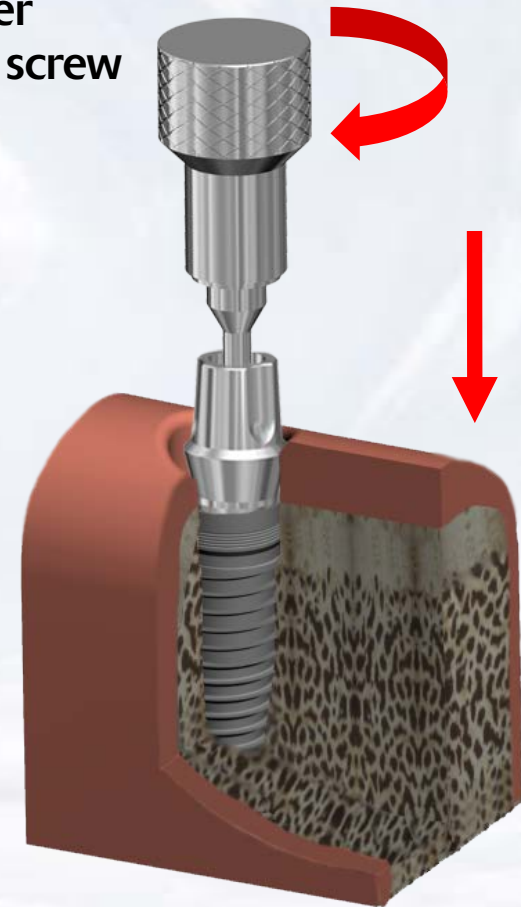
Blue Sky Bio

KISS Internal Hex Abutment System

Insert the KISS Abutment into implant lining up the lobes of the abutment with the lobes of the implant

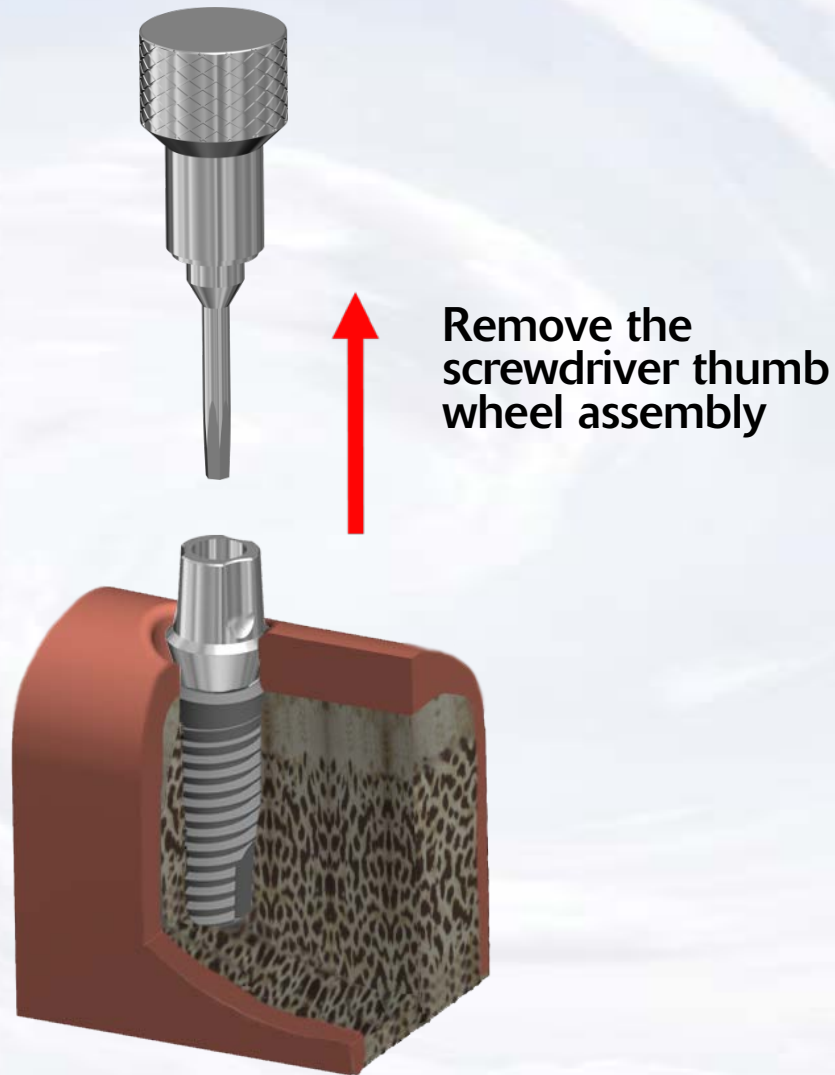


Use only light finger pressure to torque screw



Blue Sky Bio

KISS Internal Hex Abutment System



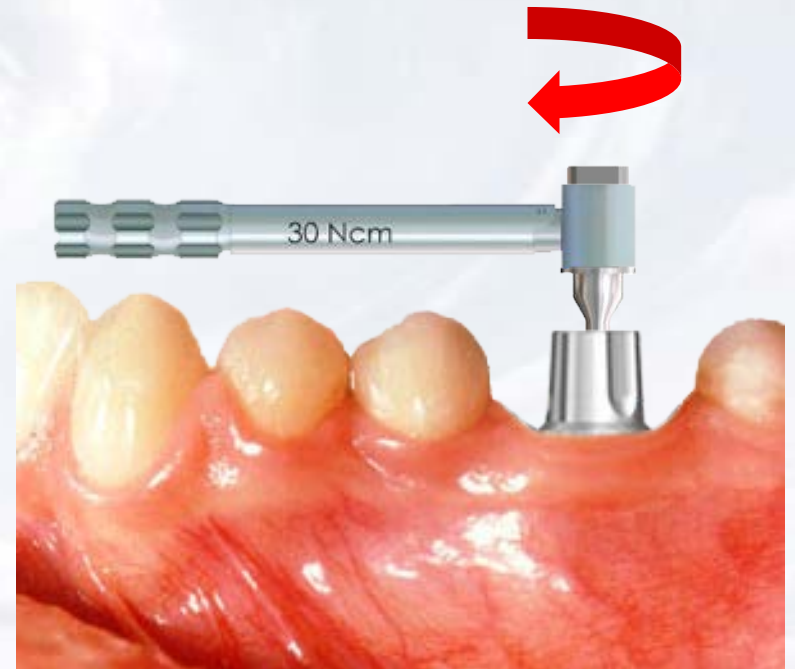
Blue Sky Bio

KISS Internal Hex Abutment System

Insert the hex driver within the 30Ncm torque ratchet

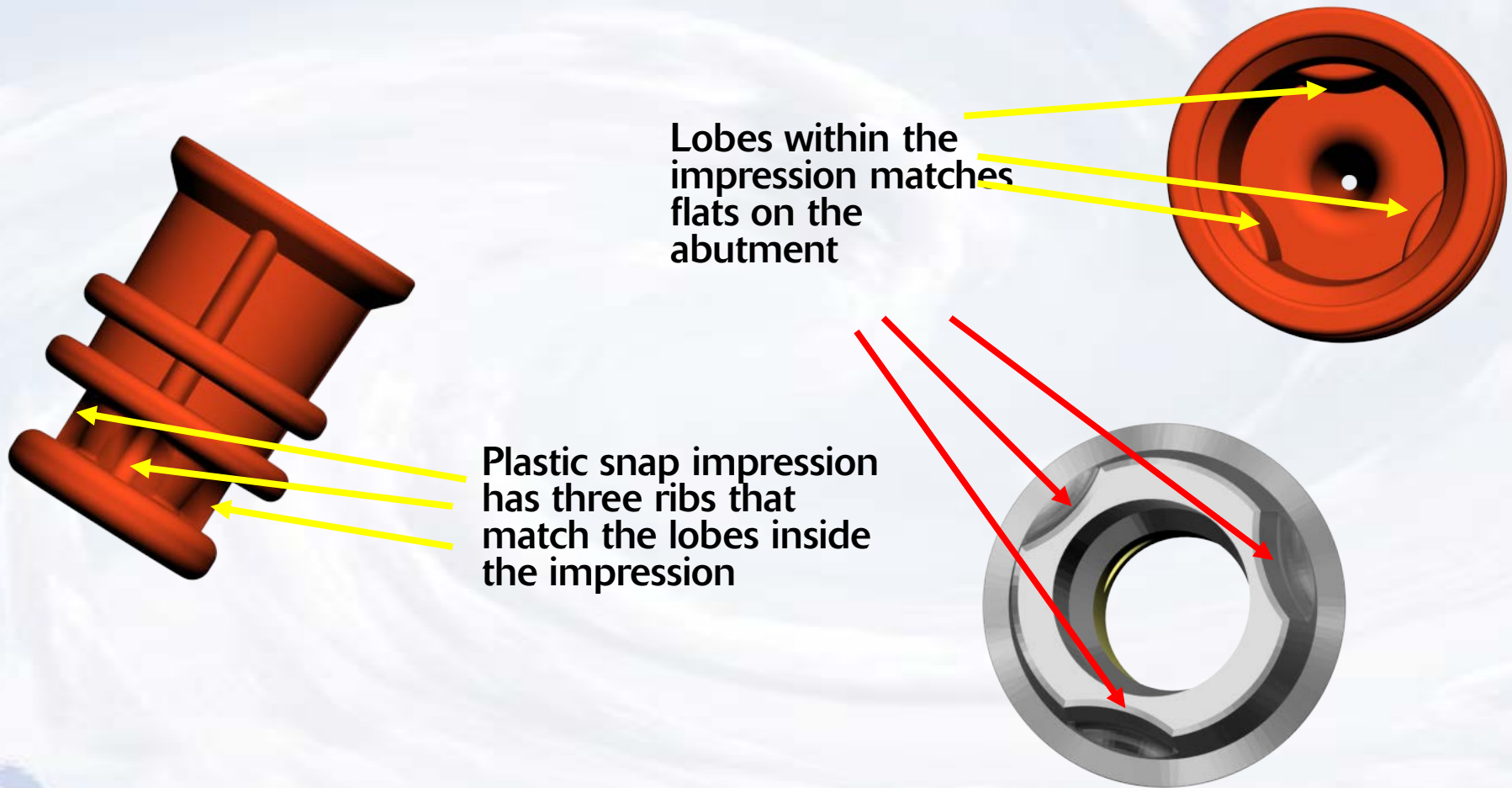


Insert driver into the abutment screw and turn torque ratchet until torque of 30 Ncm is reached and the head of the ratchet releases



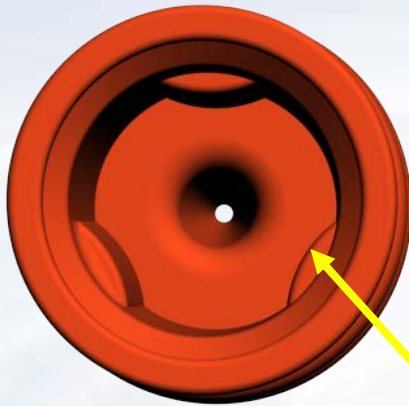
Blue Sky Bio

KISS Internal Hex Abutment System



Blue Sky Bio

KISS Internal Hex Abutment System



Line up the lobes of the KISS Abutment with the internal lobes of the snap impression coping

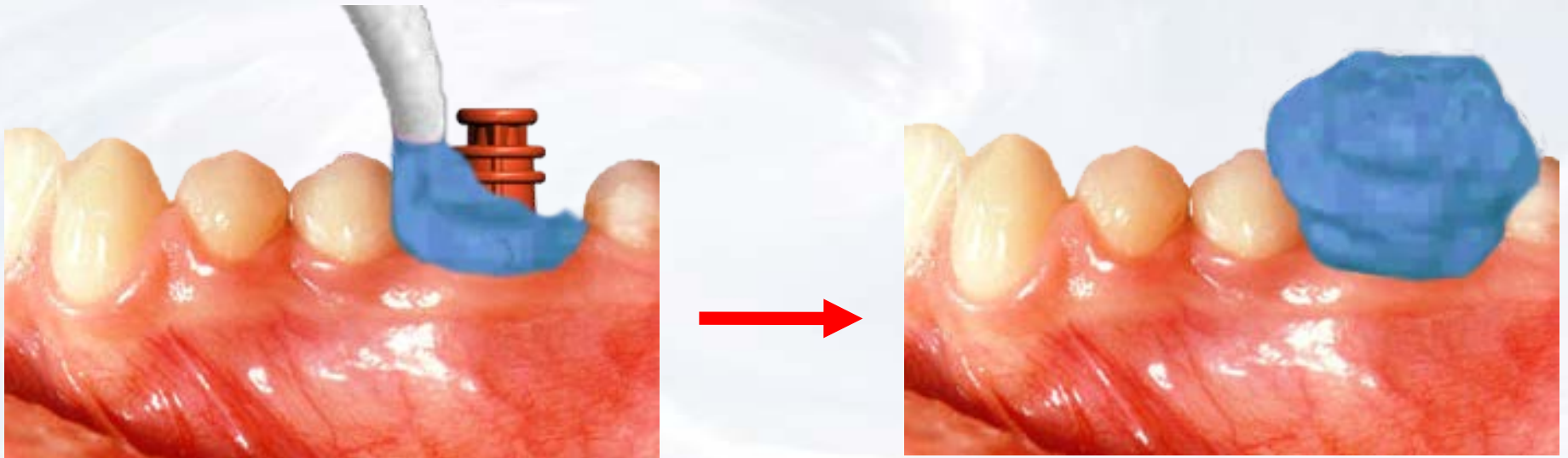
Seat snap impression coping on the solid abutment

The outside should snap on the bevel of the implant.



Blue Sky Bio

KISS Internal Hex Abutment System

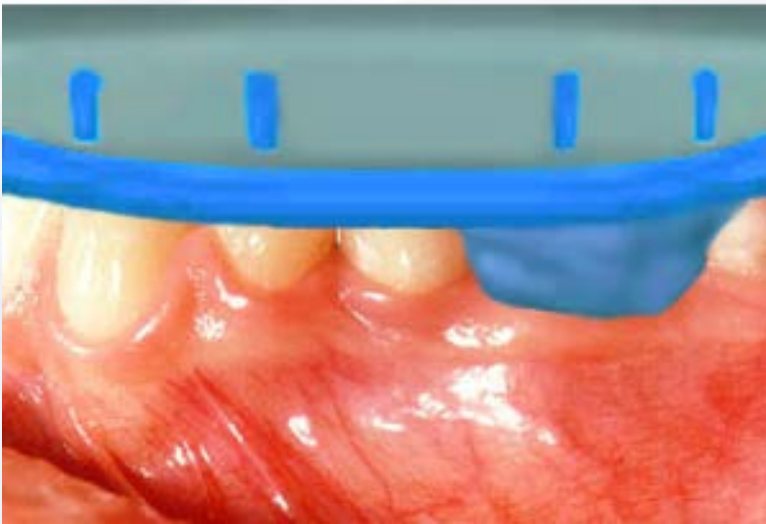


Inject impression material around the
impression transfer

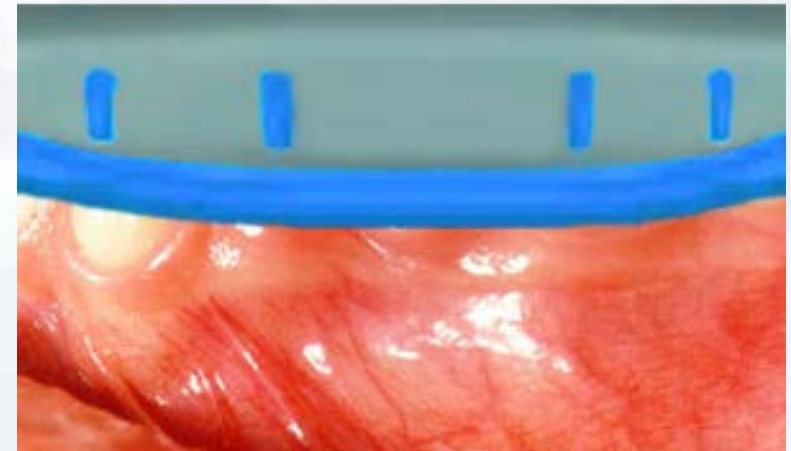


Blue Sky Bio

KISS Internal Hex Abutment System



Insert tray with impression material

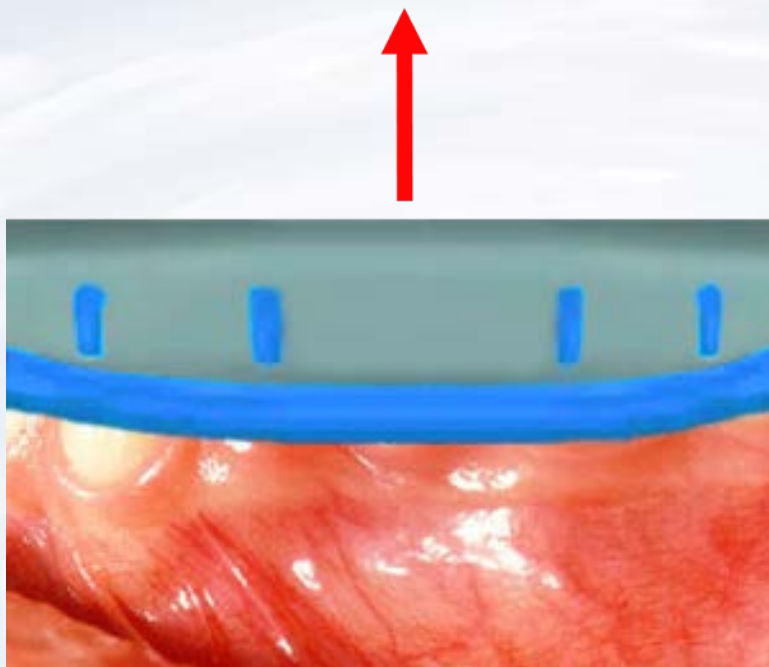


Seat impression to capture dental arch



Blue Sky Bio

KISS Internal Hex Abutment System



Remove the impression from the mouth when material has set

Impression snap is captured and picked up within the impression



Blue Sky Bio

KISS Internal Hex Abutment System

Seat the temporary resin sleeve over the abutment



Use a crown form to reline over the sleeve to create a well fitting temporary



Blue Sky Bio

KISS Internal Hex Abutment System

Laboratory abutment analog is inserted into the impression coping. Make sure to match the lobes on the abutment analog to the lobes of the impression snap



Blue Sky Bio

KISS Internal Hex Abutment System

Apply soft tissue replica
material around abutment
level analog

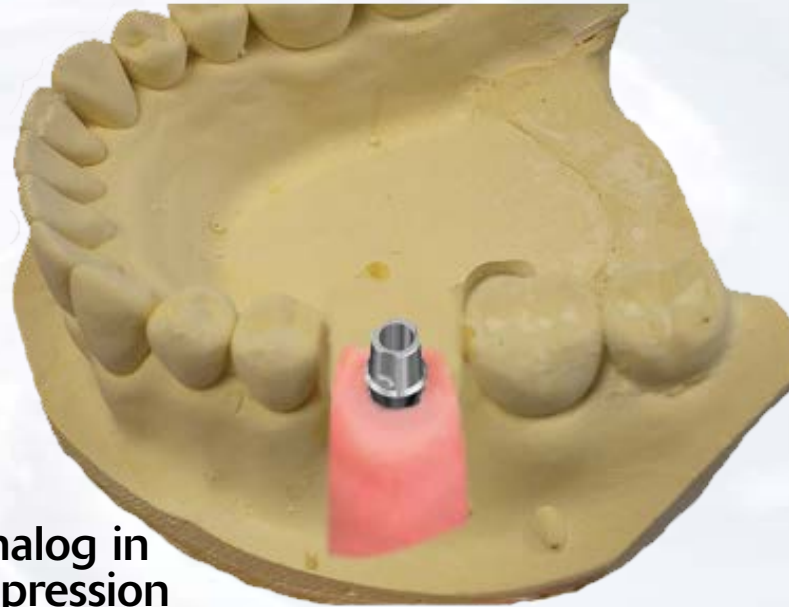


Pour dental stone into impression



Blue Sky Bio

KISS Internal Hex Abutment System

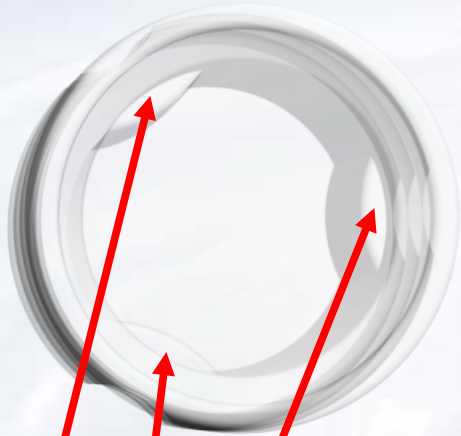


Dental stone model with analog in place after separation of impression from dried stone



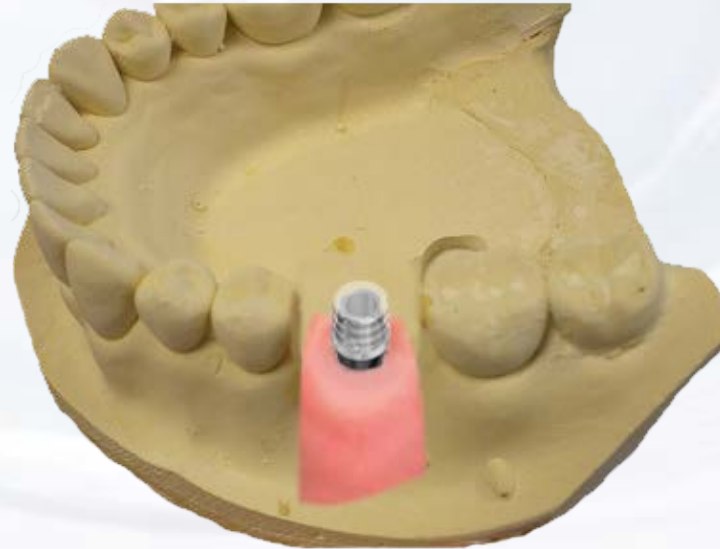
Blue Sky Bio

KISS Internal Hex Abutment System



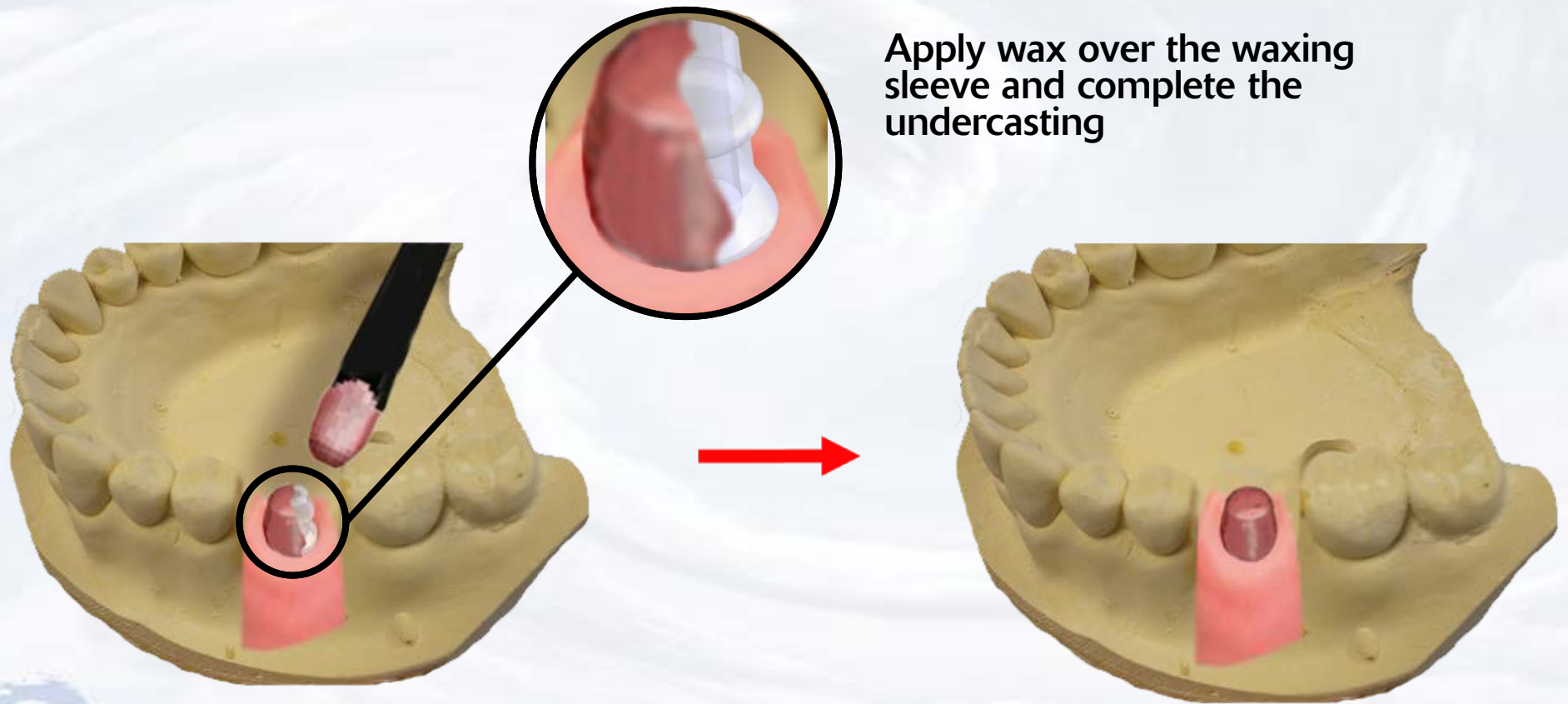
Engaging waxing sleeve has internal lobes to match the lobes on the abutment analog

Apply engaging waxing sleeve for a single crown, non-engaging waxing sleeve for a splinted multi-unit restoration.



Blue Sky Bio

KISS Internal Hex Abutment System



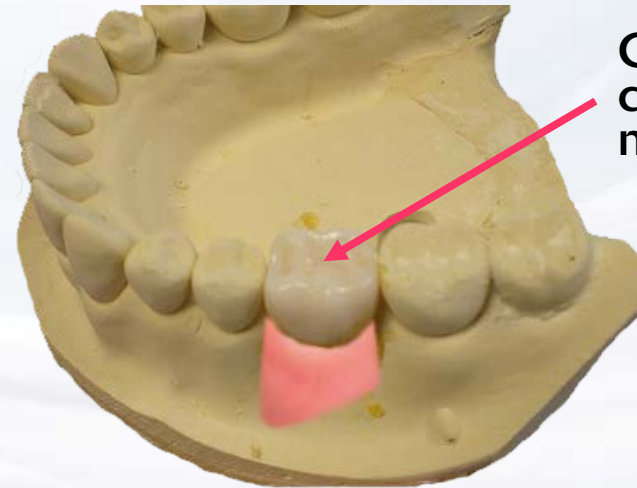
Blue Sky Bio

KISS Internal Hex Abutment System

Cast wax up with the usual procedures and try in the casting on the stone model



Stack and fire the ceramic in the usual manner



Ceramic crown on model



Blue Sky Bio

KISS Internal Hex Abutment System



Cement restoration on
abutment



Blue Sky Bio