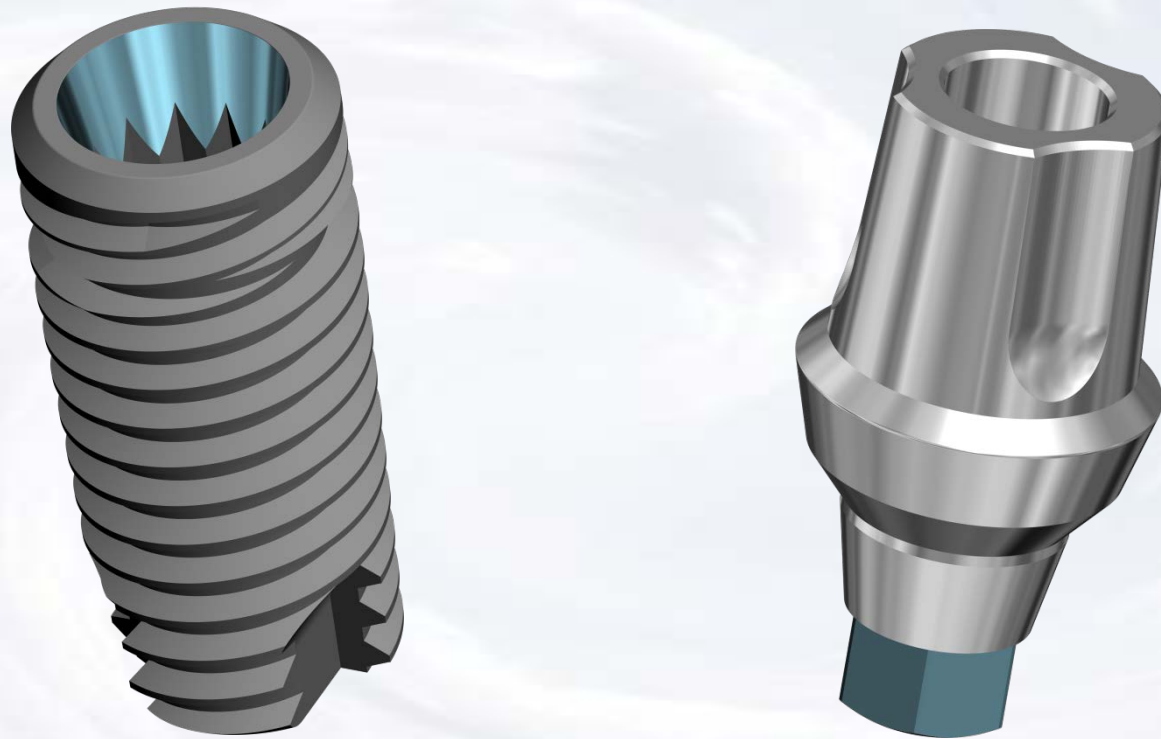
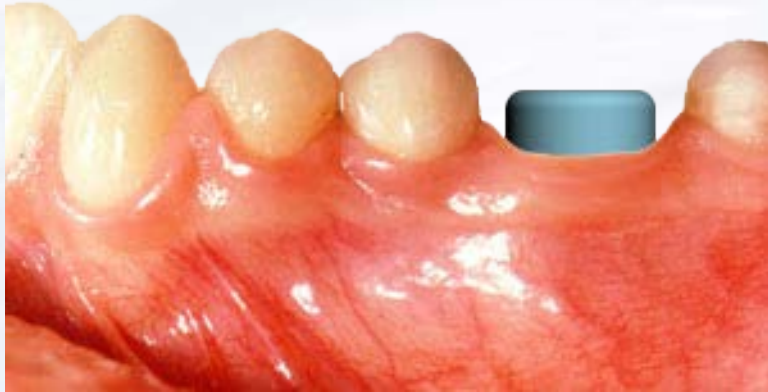


KISS Conus Abutment System



Blue Sky Bio

KISS Conus Abutment System



Choose matching
abutment

Healing abutment in place

The presentation that follows lists only one combination of parts. Obviously the clinical situation may call for substitution of another part on this slide.

3.5/4.0 Regular Platform KISS



Size	Part #
3.5/4.0 KISS Regular Complete Kit 2mm collar	KASDH3502
3.5/4.0 KISS Abutment 2mm collar	ASDH3502
KISS Abutment Analog, Regular	BMKISR
KISS Impression Kit Regular	KIKR

4.5/5.0 Regular Platform KISS




Size	Part #
4.5/5.0 KISS Regular Complete Kit 2mm collar	KASDH5002
4.5/5.0 KISS Abutment 2mm collar	ASDH5002
KISS Abutment Analog, Wide	BMKISW
KISS Impression Kit Wide	KIKW



Blue Sky Bio

KISS Conus Abutment System

	Size	Part #
	.050 Hex Driver Short	SDS050
	.050 Hex Driver Long	SDL050
	Torque/Ratchet Wrench	TR-900-01
	Thumb Knob for Drivers	TK

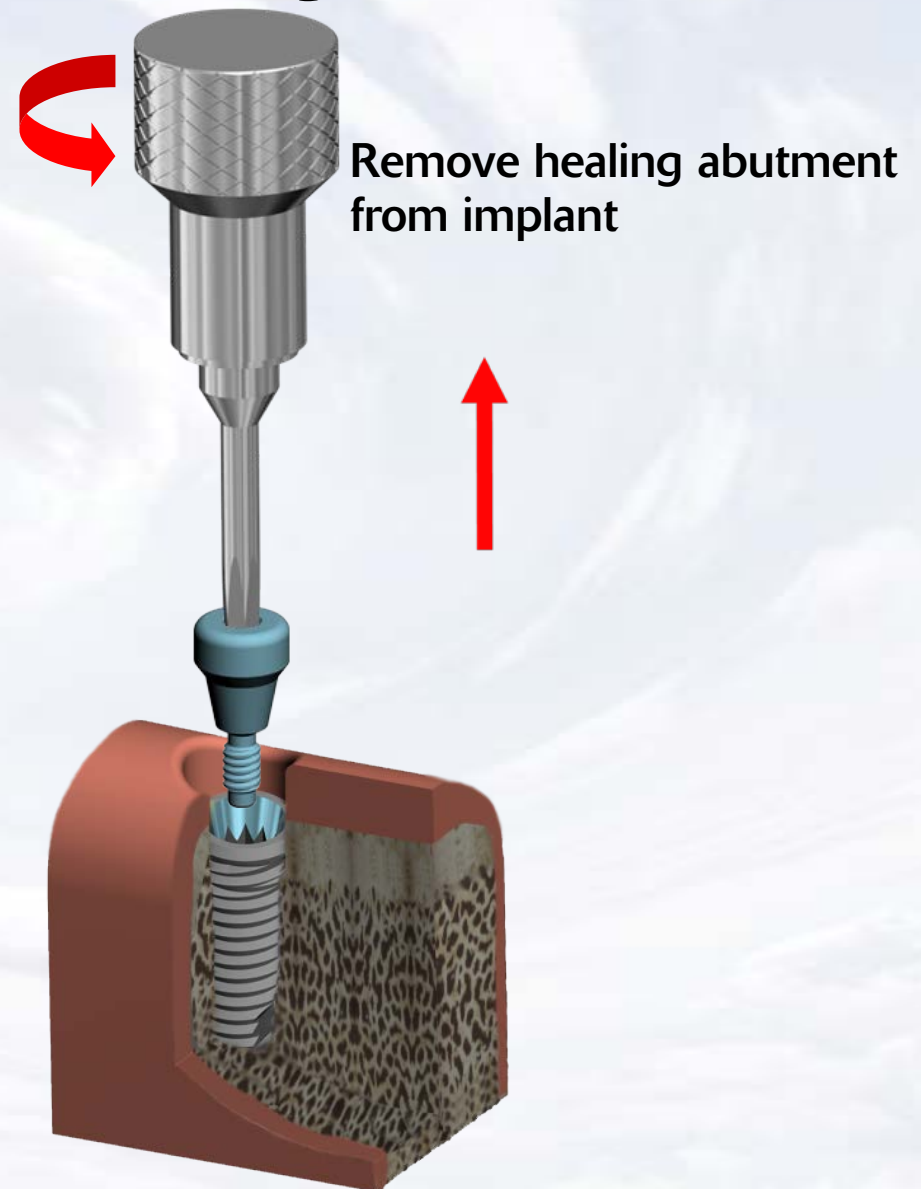
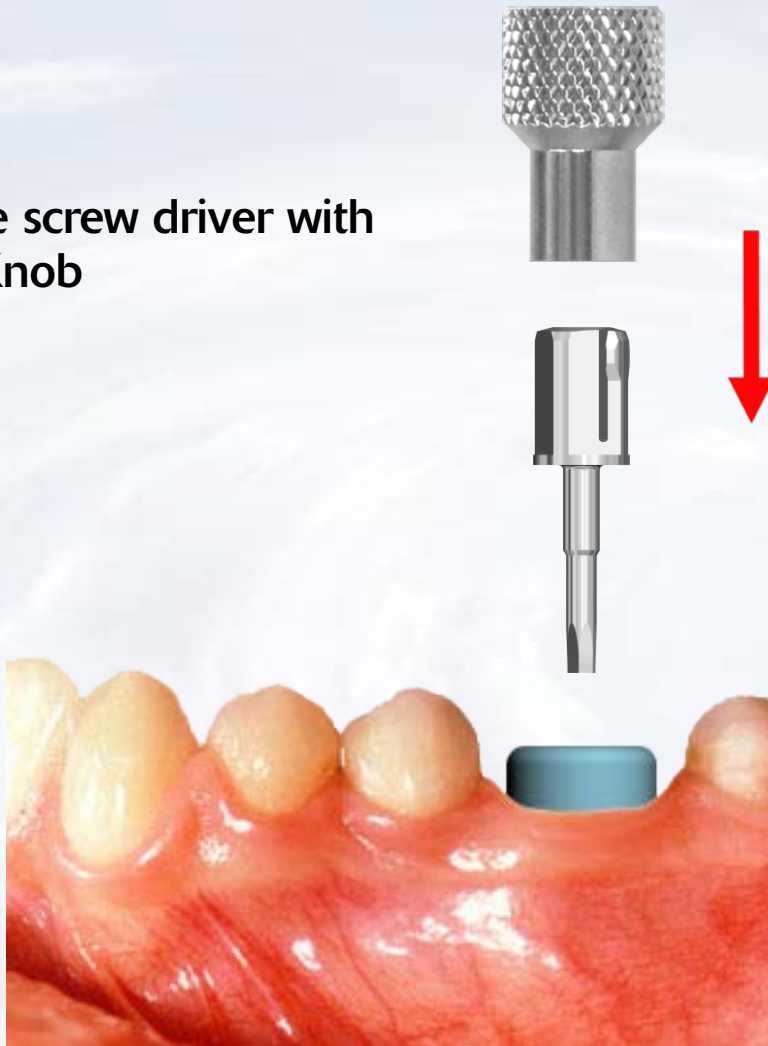
Prosthetic instruments needed



Blue Sky Bio

KISS Conus Abutment System

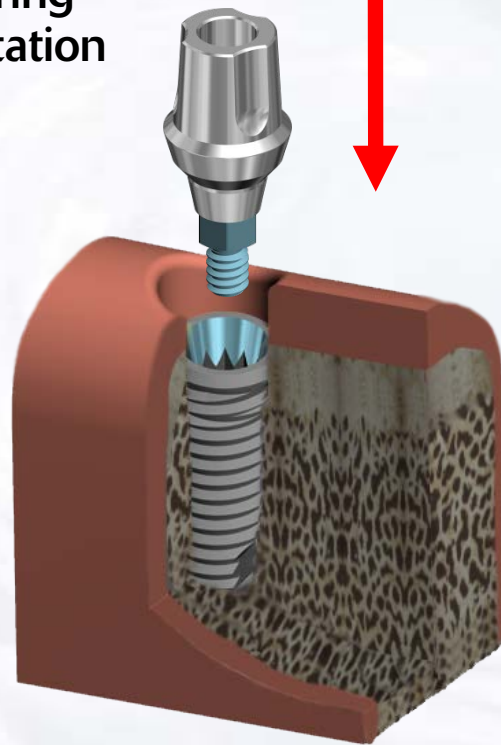
Assemble screw driver with
Thumb Knob



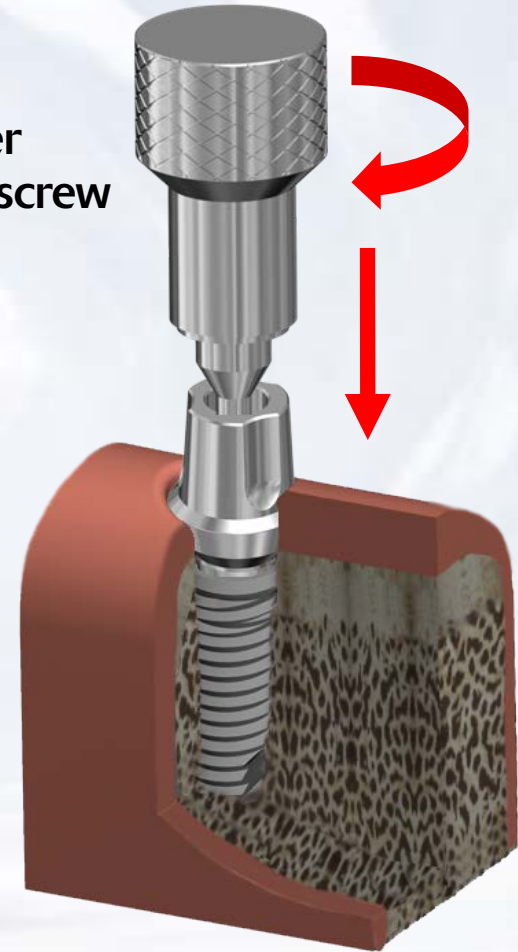
Blue Sky Bio

KISS Conus Abutment System

Insert the Kiss abutment into the implant ensuring the appropriate orientation

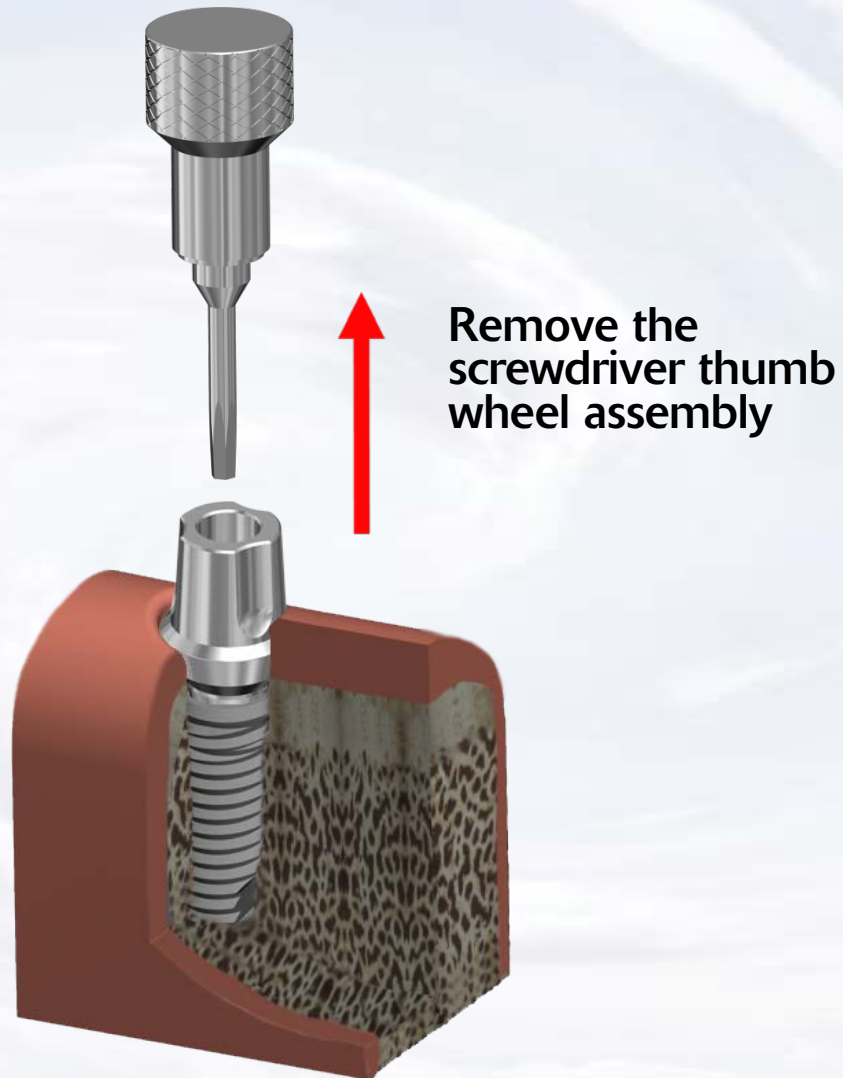


Use only light finger pressure to torque screw



Blue Sky Bio

KISS Conus Abutment System



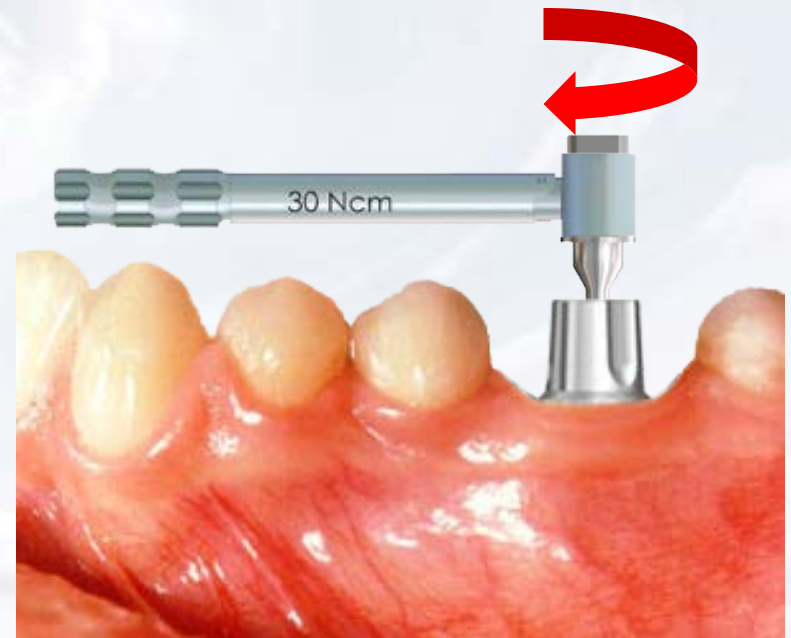
Blue Sky Bio

KISS Conus Abutment System

Insert the hex driver within the 30Ncm torque ratchet

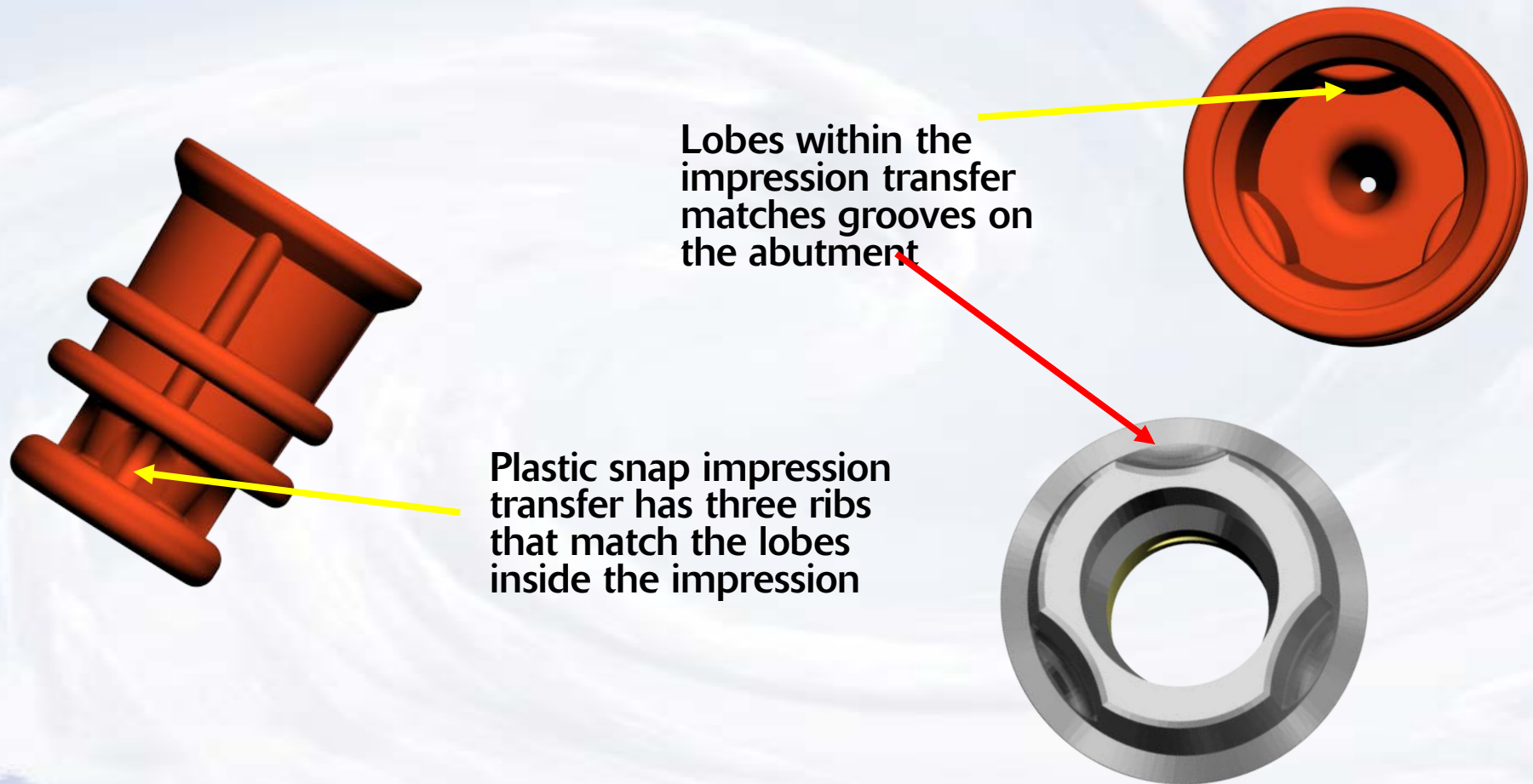


Insert driver into the abutment screw and turn torque ratchet until torque of 30 Ncm is reached and the head of the ratchet releases



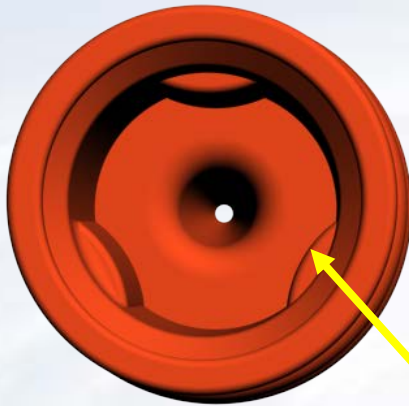
Blue Sky Bio

KISS Conus Abutment System



Blue Sky Bio

KISS Conus Abutment System



Line up the lobes of the snap impression coping with the grooves of the KISS Abutment



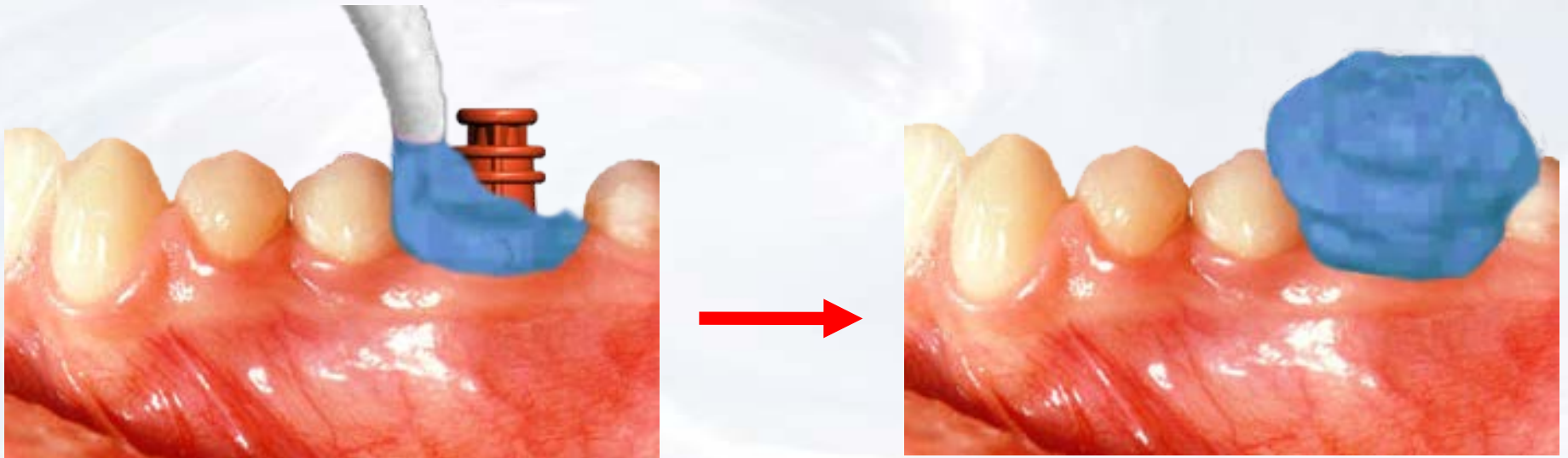
Seat snap impression coping on the solid abutment

The outside should snap on the bevel of the implant.



Blue Sky Bio

KISS Conus Abutment System

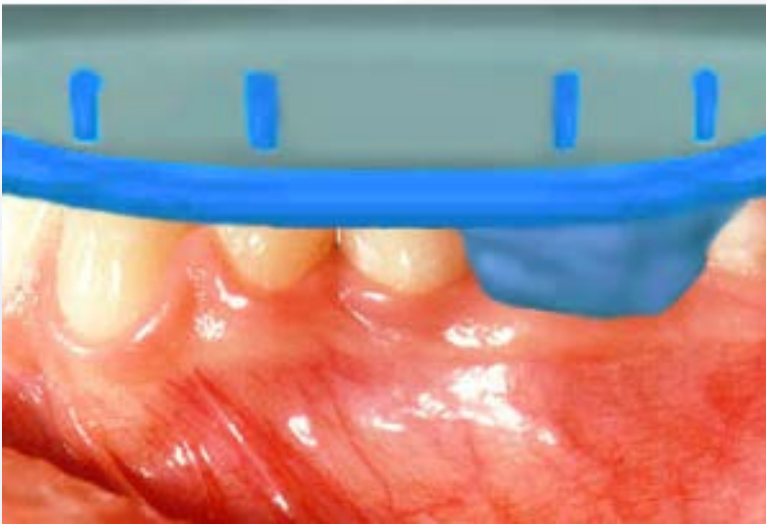


Inject impression material around the
impression transfer

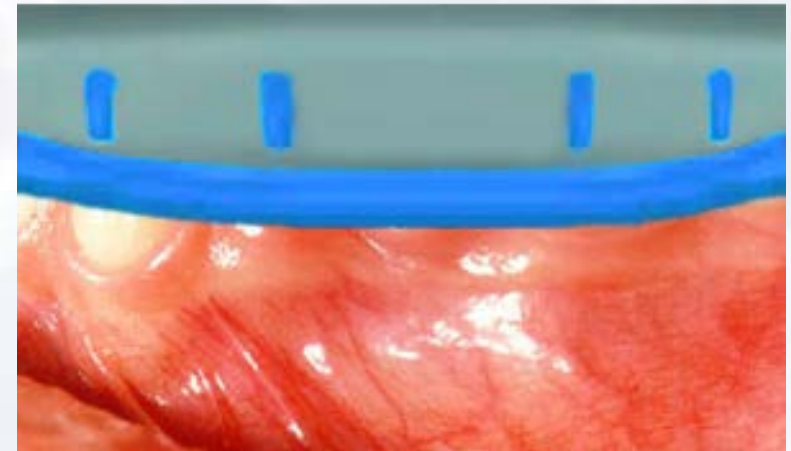


Blue Sky Bio

KISS Conus Abutment System



Insert tray with impression material

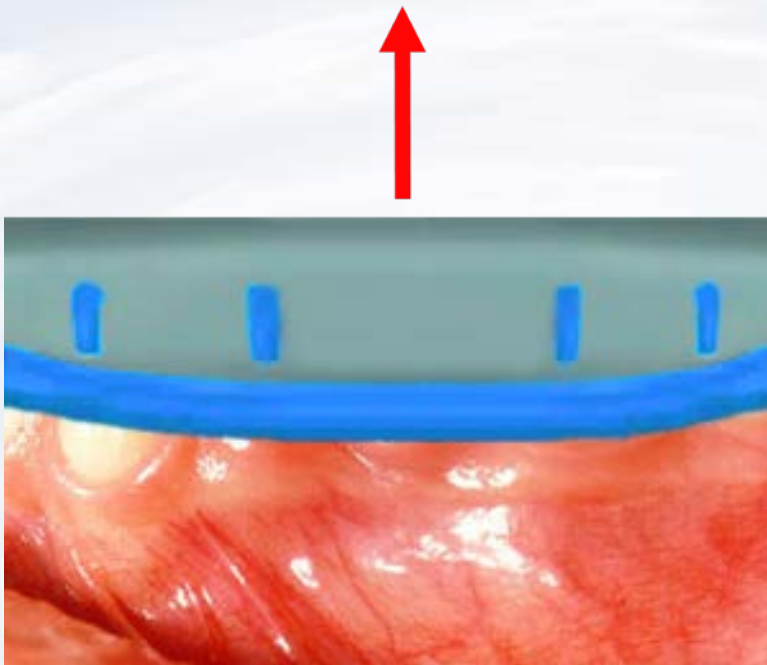


Seat impression to capture dental arch



Blue Sky Bio

KISS Conus Abutment System



Remove the impression from the mouth when material has set

Impression snap is captured and picked up within the impression



Blue Sky Bio

KISS Conus Abutment System

Seat the temporary resin sleeve over the abutment



Use a crown form to reline over the sleeve to create a well fitting temporary



Blue Sky Bio

KISS Conus Abutment System

Laboratory abutment analog is inserted into the impression coping. Make sure to match the grooves on the abutment analog to the lobes of the impression snap



Blue Sky Bio

KISS Conus Abutment System

Apply soft tissue replica
material around abutment
level analog

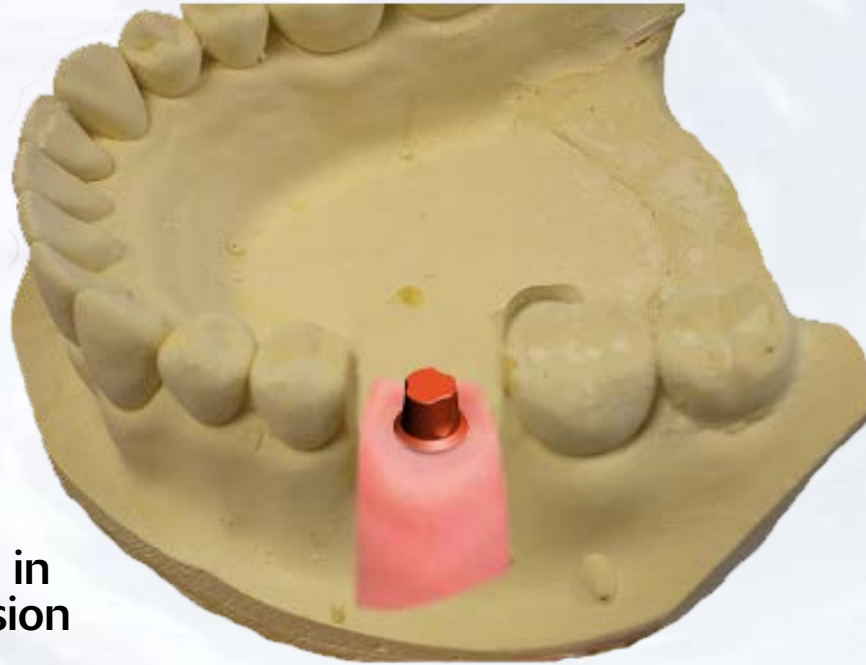


Pour dental stone into impression



Blue Sky Bio

KISS Conus Abutment System

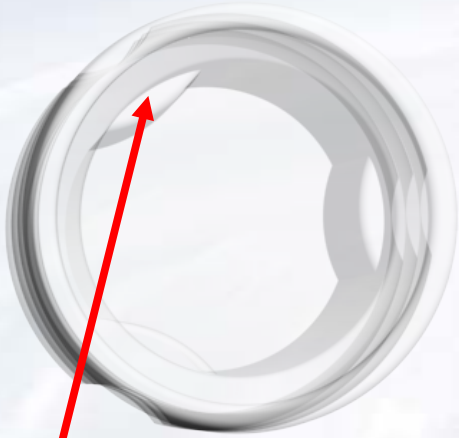


Dental stone model with analog in place after separation of impression from dried stone



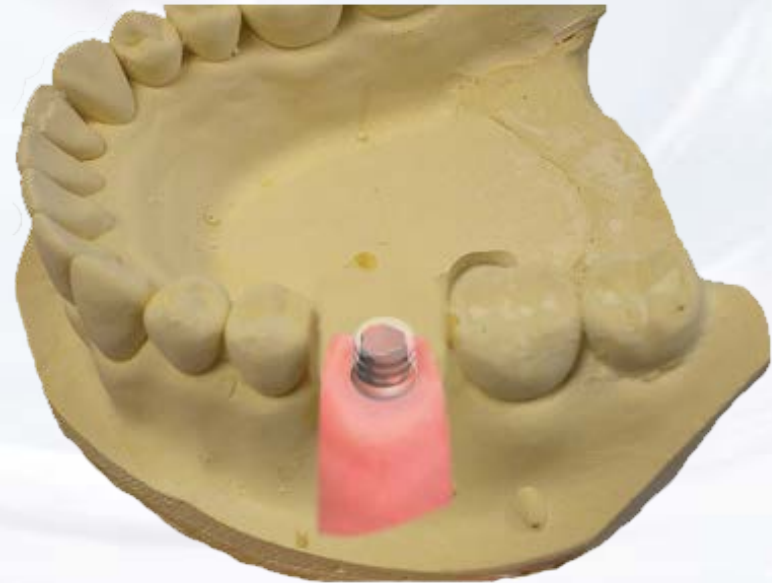
Blue Sky Bio

KISS Conus Abutment System



Engaging waxing sleeve has Double lobes to match the grooves on the abutment analog

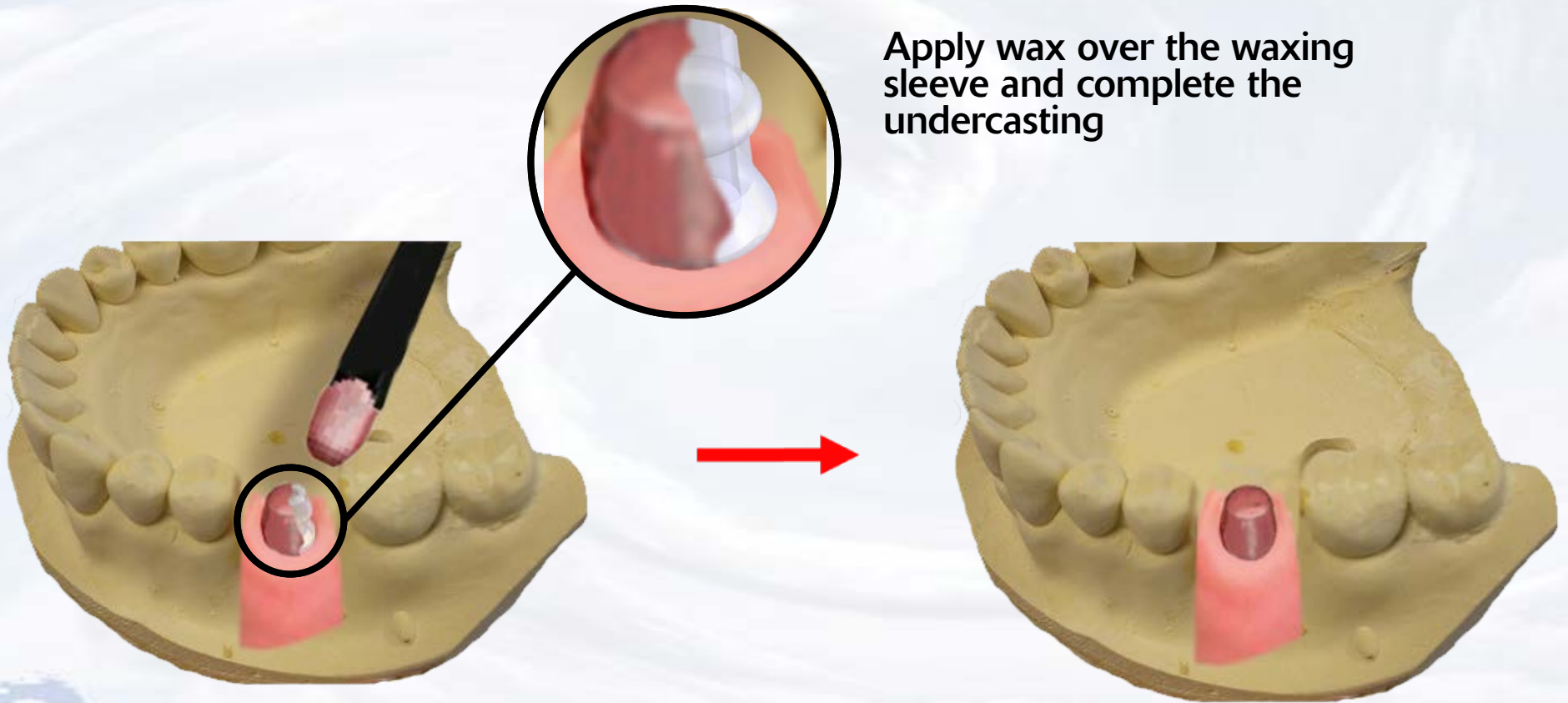
Apply engaging waxing sleeve for a single crown, non-engaging waxing sleeve for a splinted multi-unit restoration.



Blue Sky Bio

KISS Conus Abutment System

Apply wax over the waxing sleeve and complete the undercasting



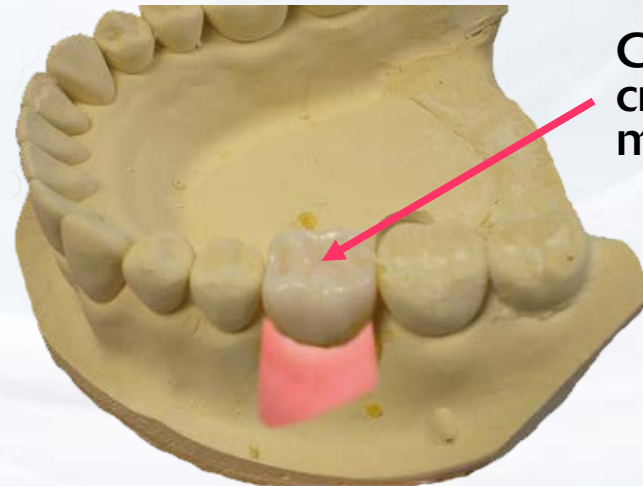
Blue Sky Bio

KISS Conus Abutment System

Cast wax up with the usual procedures and try in the casting on the stone model



Stack and fire the ceramic in the usual manner



Ceramic crown on model



Blue Sky Bio

KISS Conus Abutment System



Cement restoration on
abutment



Blue Sky Bio